

ABAT antibody

Cat. No. GTX133362

Host	Rabbit
Clonality	Polyclonal
Isotype	IgG
Application	WB, IHC-P, IHC-Fr
Reactivity	Human, Mouse, Rat

Package
100 µl, 25 µl

APPLICATION

Application Note

*Optimal dilutions/concentrations should be determined by the researcher.

Suggested dilution	Recommended dilution
WB	1:1000-1:10000
IHC-P	1:100-1:1000
IHC-Fr	1:100-1:1000

Not tested in other applications.

Calculated MW 56 kDa. ([Note](#))

PROPERTIES

Form	Liquid
Buffer	PBS, 1% BSA, 20% Glycerol
Preservative	0.025% ProClin 300
Storage	Store as concentrated solution. Centrifuge briefly prior to opening vial. For short-term storage (1-2 weeks), store at 4°C. For long-term storage, aliquot and store at -20°C or below. Avoid multiple freeze-thaw cycles.
Concentration	0.4 mg/ml (Please refer to the vial label for the specific concentration.)
Immunogen	Recombinant protein encompassing a sequence within the center region of mouse ABAT. The exact sequence is proprietary.
Purification	Purified by antigen-affinity chromatography.
Conjugation	Unconjugated

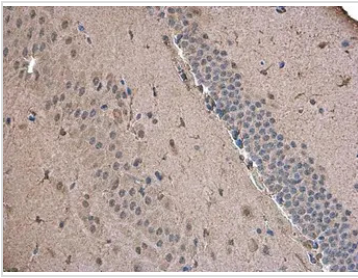
Note

For laboratory research use only. Not for any clinical, therapeutic, or diagnostic use in humans or animals. Not for animal or human consumption.

Purchasers shall not, and agree not to enable third parties to, analyze, copy, reverse engineer or otherwise attempt to determine the structure or sequence of the product.



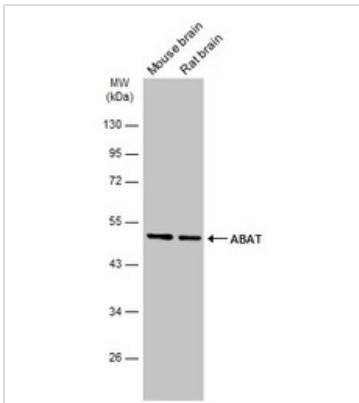
For full product information, images and publications, please visit our [website](#).

DATA IMAGES

GTX133362 IHC-P Image

ABAT antibody detects ABAT protein at cytoplasm in mouse brain by immunohistochemical analysis.

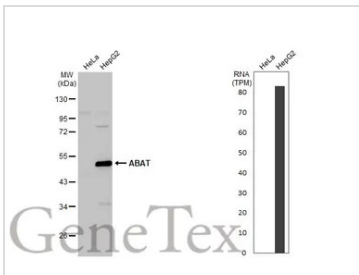
Sample: Paraffin-embedded mouse brain.

ABAT antibody (GTX133362) diluted at 1:500.

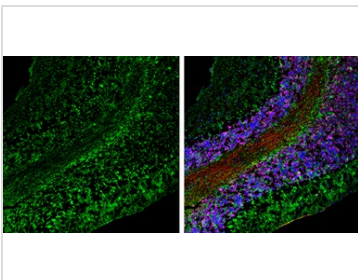

GTX133362 WB Image

Various tissue extracts (10 µg) were separated by 10% SDS-PAGE, and the membrane was blotted with

ABAT antibody (GTX133362) diluted at 1:5000.


GTX133362 WB Image

Various whole cell extracts (30 µg) were separated by 10% SDS-PAGE, and the membrane was blotted with ABAT antibody (GTX133362) diluted at 1:1000. The HRP-conjugated anti-rabbit IgG antibody (GTX213110-01) was used to detect the primary antibody. Corresponding RNA expression data for the same cell lines are based on Human Protein Atlas program.


GTX133362 IHC-Fr Image

ABAT antibody detects ABAT Protein expression by immunohistochemical analysis.

Sample: Frozen-sectioned adult mouse cerebellum.

Green: ABAT stained by ABAT antibody (GTX133362) diluted at 1:250.

Red: NeuN, stained by NeuN antibody [2Q158] (GTX30773) diluted at 1:500.

Blue: Fluoroshield with DAPI (GTX30920).



For full product information, images and publications, please visit our [website](https://www.genetex.com).