

MARS antibody

Cat. No. GTX133363

Host	Rabbit
Clonality	Polyclonal
Isotype	IgG
Application	WB, IHC-P, IHC-Fr
Reactivity	Mouse, Rat

Package
100 µl, 25 µl

APPLICATION

Application Note

*Optimal dilutions/concentrations should be determined by the researcher.

Suggested dilution	Recommended dilution
WB	1:500-1:3000
IHC-P	1:100-1:1000
IHC-Fr	1:100-1:1000

Not tested in other applications.

Calculated MW 101 kDa. ([Note](#))

PROPERTIES

Form	Liquid
Buffer	PBS, 1% BSA, 20% Glycerol
Preservative	0.025% ProClin 300
Storage	Store as concentrated solution. Centrifuge briefly prior to opening vial. For short-term storage (1-2 weeks), store at 4°C. For long-term storage, aliquot and store at -20°C or below. Avoid multiple freeze-thaw cycles.
Concentration	0.48 mg/ml (Please refer to the vial label for the specific concentration.)
Immunogen	Recombinant protein encompassing a sequence within the center region of mouse MARS. The exact sequence is proprietary.
Purification	Purified by antigen-affinity chromatography.
Conjugation	Unconjugated

Note

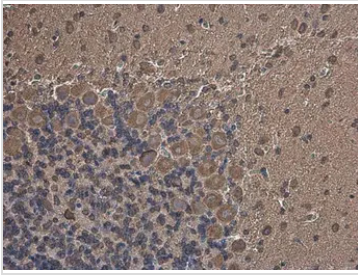
For laboratory research use only. Not for any clinical, therapeutic, or diagnostic use in humans or animals. Not for animal or human consumption.

Purchasers shall not, and agree not to enable third parties to, analyze, copy, reverse engineer or otherwise attempt to determine the structure or sequence of the product.



For full product information, images and publications, please visit our [website](#).

DATA IMAGES



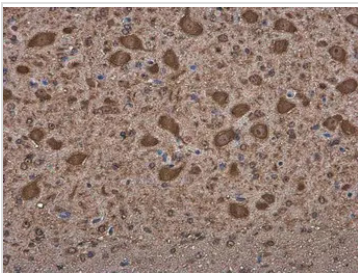
GTX133363 IHC-P Image

MARS antibody detects MARS protein at cytoplasm in rat brain by immunohistochemical analysis.

Sample: Paraffin-embedded rat brain.

MARS antibody (GTX133363) diluted at 1:500.

Antigen Retrieval: Citrate buffer, pH 6.0, 15 min



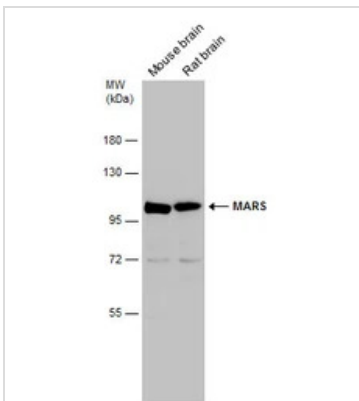
GTX133363 IHC-P Image

MARS antibody detects MARS protein at cytoplasm in mouse brain by immunohistochemical analysis.

Sample: Paraffin-embedded mouse brain.

MARS antibody (GTX133363) diluted at 1:500.

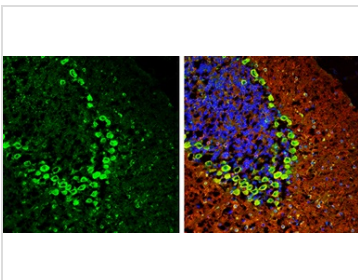
Antigen Retrieval: Citrate buffer, pH 6.0, 15 min



GTX133363 WB Image

Various tissue extracts (50 µg) were separated by 7.5% SDS-PAGE, and the membrane was blotted with

MARS antibody (GTX133363) diluted at 1:1000.



GTX133363 IHC-Fr Image

MARS antibody detects MARS protein expression by immunohistochemical analysis.

Sample: Frozen-sectioned adult mouse cerebellum.

Green: MARS protein stained by MARS antibody (GTX133363) diluted at 1:250.

Red: beta Tubulin 3/ TUJ1, stained by beta Tubulin 3/ Tuj1 antibody [GT886] (GTX631830) diluted at 1:500.

Blue: Fluoroshield with DAPI (GTX30920).



For full product information, images and publications, please visit our [website](https://www.genetex.com).