

MYH10 antibody

Cat. No. GTX133378

Host	Rabbit
Clonality	Polyclonal
Isotype	IgG
Application	WB, ICC/IF
Reactivity	Human

[Reference \(3 \)](#)

Package

100 µl, 25 µl

APPLICATION

Application Note

*Optimal dilutions/concentrations should be determined by the researcher.

Suggested dilution	Recommended dilution
WB	1:500-1:10000
ICC/IF	1:100-1:1000

Not tested in other applications.

Calculated MW 229 kDa. ([Note](#))

PROPERTIES

Form	Liquid
Buffer	PBS, 20% Glycerol
Preservative	0.025% ProClin 300
Storage	Store as concentrated solution. Centrifuge briefly prior to opening vial. For short-term storage (1-2 weeks), store at 4°C. For long-term storage, aliquot and store at -20°C or below. Avoid multiple freeze-thaw cycles.
Concentration	0.72 mg/ml (Please refer to the vial label for the specific concentration.)
Immunogen	Carrier-protein conjugated synthetic peptide encompassing a sequence within the N-terminus region of human MYH10. The exact sequence is proprietary.
Purification	Purified by antigen-affinity chromatography.
Conjugation	Unconjugated

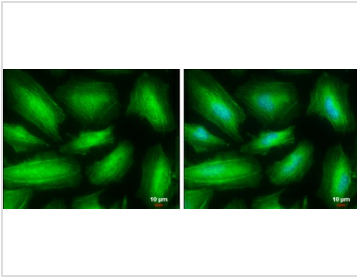
Note

For laboratory research use only. Not for any clinical, therapeutic, or diagnostic use in humans or animals. Not for animal or human consumption.

Purchasers shall not, and agree not to enable third parties to, analyze, copy, reverse engineer or otherwise attempt to determine the structure or sequence of the product.



For full product information, images and publications, please visit our [website](#).

DATA IMAGES

GTX133378 ICC/IF Image

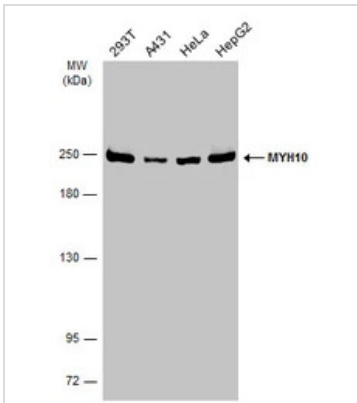
MYH10 antibody detects MYH10 protein at cytoskeleton by immunofluorescent analysis.

Sample: HeLa cells were fixed in ice-cold MeOH for 5 min.

Green: MYH10 protein stained by MYH10 antibody (GTX133378) diluted at 1:500.

Blue: Hoechst 33342 staining.

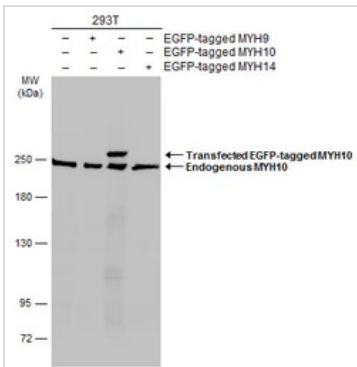
Scale bar = 10 μ m.


GTX133378 WB Image

Various whole cell extracts (30 μ g) were separated by 5% SDS-PAGE, and the membrane was blotted with

MYH10 antibody (GTX133378) diluted at 1:2000. The HRP-conjugated anti-rabbit IgG antibody

(GTX213110-01) was used to detect the primary antibody.


GTX133378 WB Image

Non-transfected (-) and transfected (+) MYH10-transfected 293T (30 μ g) were separated by 5% SDS-PAGE,

and the membrane was blotted with MYH10 antibody (GTX133378) diluted at 1:5000. The HRP-conjugated

anti-rabbit IgG antibody (GTX213110-01) was used to detect the primary antibody.



For full product information, images and publications, please visit our [website](https://www.genetex.com).