

# Cyclin T1 antibody

**Cat. No. GTX133413**

<b>Host</b>	Rabbit
<b>Clonality</b>	Polyclonal
<b>Isotype</b>	IgG
<b>Application</b>	WB, ICC/IF
<b>Reactivity</b>	Human, Mouse, Rat

[Reference \( 2 \)](#)

**Package**

100 µl, 25 µl

## APPLICATION

### Application Note

\*Optimal dilutions/concentrations should be determined by the researcher.

Suggested dilution	Recommended dilution
WB	1:500-1:3000
ICC/IF	1:100-1:1000

Not tested in other applications.

**Calculated MW** 81 kDa. ( [Note](#) )

## PROPERTIES

<b>Form</b>	Liquid
<b>Buffer</b>	PBS, 20% Glycerol
<b>Preservative</b>	0.025% ProClin 300
<b>Storage</b>	Store as concentrated solution. Centrifuge briefly prior to opening vial. For short-term storage (1-2 weeks), store at 4°C. For long-term storage, aliquot and store at -20°C or below. Avoid multiple freeze-thaw cycles.
<b>Concentration</b>	1 mg/ml (Please refer to the vial label for the specific concentration.)
<b>Immunogen</b>	Recombinant protein encompassing a sequence within the center region of human Cyclin T1. The exact sequence is proprietary.
<b>Purification</b>	Purified by antigen-affinity chromatography.
<b>Conjugation</b>	Unconjugated

### Note

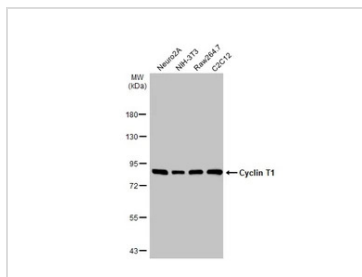
For laboratory research use only. Not for any clinical, therapeutic, or diagnostic use in humans or animals. Not for animal or human consumption.

Purchasers shall not, and agree not to enable third parties to, analyze, copy, reverse engineer or otherwise attempt to determine the structure or sequence of the product.



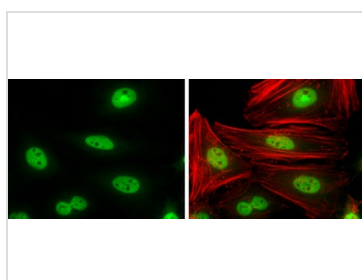
For full product information, images and publications, please visit our [website](#).

## DATA IMAGES



### GTX133413 WB Image

Various whole cell extracts (30 µg) were separated by 7.5% SDS-PAGE, and the membrane was blotted with Cyclin T1 antibody (GTX133413) diluted at 1:1000. The HRP-conjugated anti-rabbit IgG antibody (GTX213110-01) was used to detect the primary antibody.



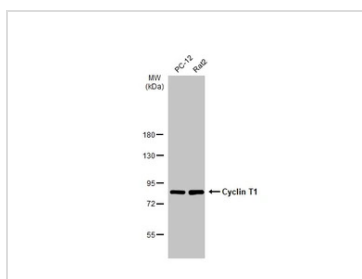
### GTX133413 ICC/IF Image

Cyclin T1 antibody detects Cyclin T1 protein at nucleus by immunofluorescent analysis.

Sample: HeLa cells were fixed in 4% paraformaldehyde at RT for 15 min.

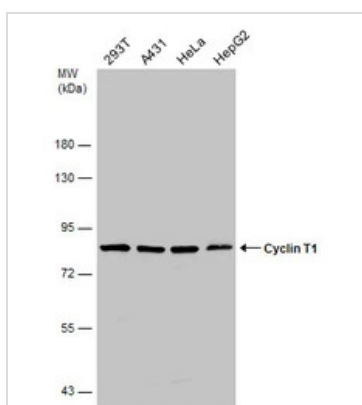
Green: Cyclin T1 protein stained by Cyclin T1 antibody (GTX133413) diluted at 1:500.

Red: Phalloidin, a cytoskeleton marker, diluted at 1:100.



### GTX133413 WB Image

Various whole cell extracts (30 µg) were separated by 7.5% SDS-PAGE, and the membrane was blotted with Cyclin T1 antibody (GTX133413) diluted at 1:1000. The HRP-conjugated anti-rabbit IgG antibody (GTX213110-01) was used to detect the primary antibody.



### GTX133413 WB Image

Various whole cell extracts (50 µg) were separated by 7.5% SDS-PAGE, and the membrane was blotted with Cyclin T1 antibody (GTX133413) diluted at 1:1000.



For full product information, images and publications, please visit our [website](https://www.genetex.com).