

EGFR (phospho Tyr992) antibody

Cat. No. GTX133429

Host	Rabbit
Clonality	Polyclonal
Isotype	IgG
Applications	WB, ICC/IF
Reactivity	Human

Package
100 µl, 25 µl

Applications

Application Note

*Optimal dilutions/concentrations should be determined by the researcher.

Suggested dilution	Recommended dilution
WB	1:500-1:3000
ICC/IF	1:100-1:1000

Not tested in other applications.

Calculated MW 134 kDa. ([Note](#))

Product Note

The full-length EGFR includes the 24 aa signal peptide that is cleaved during EGFR maturation. The Tyr992 of mature EGFR is equivalent to Tyr1016 of uncleaved EGFR.

Properties

Form	Liquid
Buffer	PBS, 1% BSA, 20% Glycerol
Preservative	0.025% ProClin 300
Storage	Store as concentrated solution. Centrifuge briefly prior to opening vial. For short-term storage (1-2 weeks), store at 4°C. For long-term storage, aliquot and store at -20°C or below. Avoid multiple freeze-thaw cycles.
Concentration	0.26 mg/ml (Please refer to the vial label for the specific concentration.)
Immunogen	Carrier-protein conjugated synthetic peptide surrounding phospho Tyr992 of human EGFR. The exact sequence is proprietary.
Purification	Purified by antigen-affinity chromatography.
Conjugation	Unconjugated



For full product information, images and publications, please visit our [website](#).

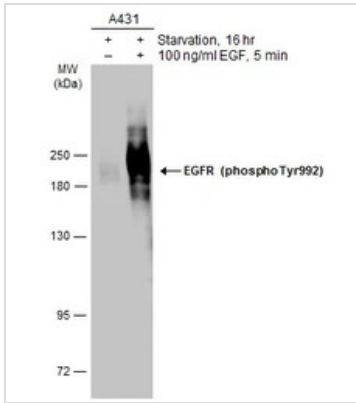
Date 2025 / 08 / 15 Page 1 of 2

For laboratory research use only. Not for any clinical, therapeutic, or diagnostic use in humans or animals. Not for animal or human consumption.

Note

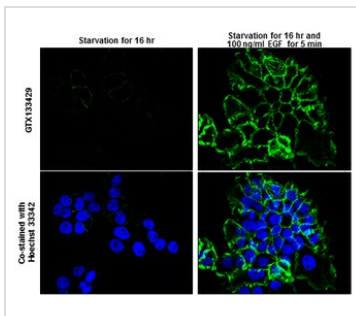
Purchasers shall not, and agree not to enable third parties to, analyze, copy, reverse engineer or otherwise attempt to determine the structure or sequence of the product.

DATA IMAGES



GTX133429 WB Image

Untreated (–) and treated (+) A431 whole cell extract (30 µg) were separated by 7.5% SDS-PAGE, and the membrane was blotted with EGFR (phospho Tyr992) antibody (GTX133429) diluted at 1:2000. The HRP-conjugated anti-rabbit IgG antibody (GTX213110-01) was used to detect the primary antibody.



GTX133429 ICC/IF Image

EGFR (phospho Tyr992) antibody detects EGFR (phospho Tyr992) protein at cell membrane by immunofluorescent analysis.

Sample: A431 cells were fixed in 4% paraformaldehyde at RT for 15 min.

Green: EGFR (phospho Tyr992) protein stained by EGFR (phospho Tyr992) antibody (GTX133429) diluted at 1:500.

Blue: Hoechst 33342 staining.



For full product information, images and publications, please visit our [website](#).