

# EGFR (phospho Tyr992) antibody

**Cat. No. GTX133429**

<b>Host</b>	Rabbit
<b>Clonality</b>	Polyclonal
<b>Isotype</b>	IgG
<b>Applications</b>	WB, ICC/IF
<b>Reactivity</b>	Human

**Package**  
100 µl, 25 µl

## Applications

### Application Note

\*Optimal dilutions/concentrations should be determined by the researcher.

Suggested dilution	Recommended dilution
WB	1:500-1:3000
ICC/IF	1:100-1:1000

Not tested in other applications.

**Calculated MW** 134 kDa. ([Note](#))

**Product Note** The full-length EGFR includes the 24 aa signal peptide that is cleaved during EGFR maturation. The Tyr992 of mature EGFR is equivalent to Tyr1016 of uncleaved EGFR.

## Properties

<b>Form</b>	Liquid
<b>Buffer</b>	PBS, 1% BSA, 20% Glycerol
<b>Preservative</b>	0.025% ProClin 300
<b>Storage</b>	Store as concentrated solution. Centrifuge briefly prior to opening vial. For short-term storage (1-2 weeks), store at 4°C. For long-term storage, aliquot and store at -20°C or below. Avoid multiple freeze-thaw cycles.
<b>Concentration</b>	0.26 mg/ml (Please refer to the vial label for the specific concentration.)
<b>Immunogen</b>	Carrier-protein conjugated synthetic peptide surrounding phospho Tyr992 of human EGFR. The exact sequence is proprietary.
<b>Purification</b>	Purified by antigen-affinity chromatography.
<b>Conjugation</b>	Unconjugated



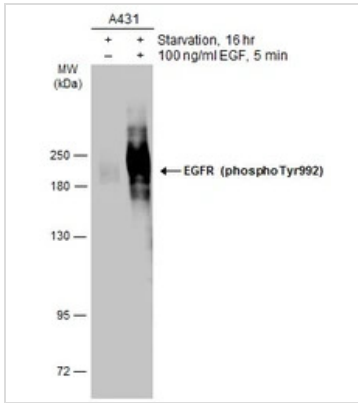
For full product information, images and publications, please visit our [website](#).

For laboratory research use only. Not for any clinical, therapeutic, or diagnostic use in humans or animals. Not for animal or human consumption.

## Note

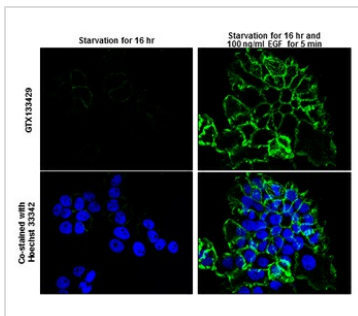
Purchasers shall not, and agree not to enable third parties to, analyze, copy, reverse engineer or otherwise attempt to determine the structure or sequence of the product.

## DATA IMAGES



### GTX133429 WB Image

Untreated (–) and treated (+) A431 whole cell extract (30 µg) were separated by 7.5% SDS-PAGE, and the membrane was blotted with EGFR (phospho Tyr992) antibody (GTX133429) diluted at 1:2000. The HRP-conjugated anti-rabbit IgG antibody (GTX213110-01) was used to detect the primary antibody.



### GTX133429 ICC/IF Image

EGFR (phospho Tyr992) antibody detects EGFR (phospho Tyr992) protein at cell membrane by immunofluorescent analysis.

Sample: A431 cells were fixed in 4% paraformaldehyde at RT for 15 min.

Green: EGFR (phospho Tyr992) protein stained by EGFR (phospho Tyr992) antibody (GTX133429) diluted at 1:500.

Blue: Hoechst 33342 staining.



For full product information, images and publications, please visit our [website](#).