

## Her2 / ErbB2 (phospho Tyr1248) antibody

**Cat. No. GTX133439**

<b>Host</b>	Rabbit
<b>Clonality</b>	Polyclonal
<b>Isotype</b>	IgG
<b>Applications</b>	WB, IHC-P
<b>Reactivity</b>	Human, Mouse

References ( 2 )

Package

100 µl, 25 µl

## Applications

**Application Note**

\*Optimal dilutions/concentrations should be determined by the researcher.

Suggested dilution	Recommended dilution
WB	1:500-1:3000
IHC-P	Assay dependent

Not tested in other applications.

**Calculated MW** 138 kDa. ([Note](#))

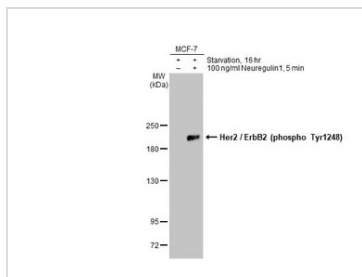
## Properties

<b>Form</b>	Liquid
<b>Buffer</b>	PBS, 1% BSA, 20% Glycerol
<b>Preservative</b>	0.025% ProClin 300
<b>Storage</b>	Store as concentrated solution. Centrifuge briefly prior to opening vial. For short-term storage (1-2 weeks), store at 4°C. For long-term storage, aliquot and store at -20°C or below. Avoid multiple freeze-thaw cycles.
<b>Concentration</b>	1.59 mg/ml (Please refer to the vial label for the specific concentration.)
<b>Immunogen</b>	Carrier-protein conjugated synthetic peptide surrounding phospho Tyr1248 of human Her2 / ErbB2. The exact sequence is proprietary.
<b>Purification</b>	Purified by antigen-affinity chromatography.
<b>Conjugation</b>	Unconjugated
<b>Note</b>	For laboratory research use only. Not for any clinical, therapeutic, or diagnostic use in humans or animals. Not for animal or human consumption.  Purchasers shall not, and agree not to enable third parties to, analyze, copy, reverse engineer or otherwise attempt to determine the structure or sequence of the product.



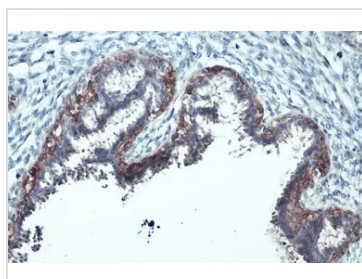
For full product information, images and publications, please visit our [website](#).

DATA IMAGES



**GTX133439 WB Image**

Untreated (-) and treated (+) MCF-7 whole cell extracts (30 µg) were separated by 5% SDS-PAGE, and the membrane was blotted with Her2 / ErbB2 (phospho Tyr1248) antibody (GTX133439) diluted at 1:1000. The HRP-conjugated anti-rabbit IgG antibody (GTX213110-01) was used to detect the primary antibody.



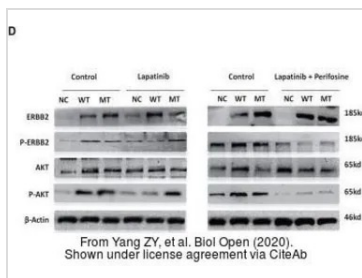
**GTX133439 IHC-P Image**

Her2 / ErbB2 (phospho Tyr1248) antibody detects Her2 / ErbB2 (phospho Tyr1248) protein at cell membrane by immunohistochemical analysis.

Sample: Paraffin-embedded human breast carcinoma.

Her2 / ErbB2 (phospho Tyr1248) stained by Her2 / ErbB2 (phospho Tyr1248) antibody (GTX133439) diluted at 1:500.

Antigen Retrieval: Citrate buffer, pH 6.0, 15 min



**GTX133439 WB Image**

The data was published in the journal Biol Open in 2020. [PMID: 31980423](https://pubmed.ncbi.nlm.nih.gov/31980423/)



For full product information, images and publications, please visit our [website](https://www.genetex.com).