

Caspase 1 (cleaved Asp297) antibody

Cat. No. GTX133447

Host	Rabbit
Clonality	Polyclonal
Isotype	IgG
Application	WB
Reactivity	Human

[Reference \(2 \)](#)**Package**

100 µl, 25 µl

APPLICATION

Application Note

*Optimal dilutions/concentrations should be determined by the researcher.

Suggested dilution	Recommended dilution
WB	1:500-1:3000
Not tested in other applications.	

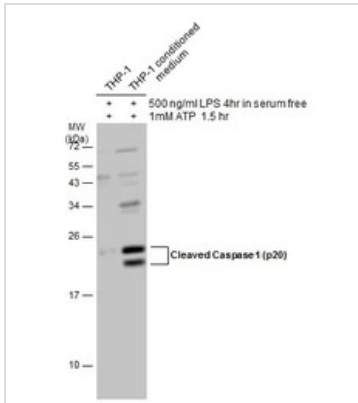
Calculated MW 45 kDa. ([Note](#))

PROPERTIES

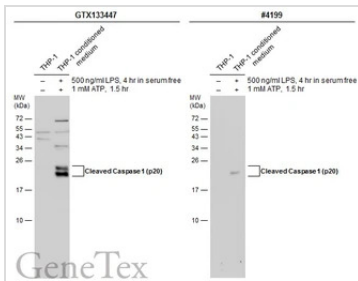
Form	Liquid
Buffer	PBS, 20% Glycerol
Preservative	0.025% ProClin 300
Storage	Store as concentrated solution. Centrifuge briefly prior to opening vial. For short-term storage (1-2 weeks), store at 4°C. For long-term storage, aliquot and store at -20°C or below. Avoid multiple freeze-thaw cycles.
Concentration	1 mg/ml (Please refer to the vial label for the specific concentration.)
Immunogen	Carrier-protein conjugated synthetic peptide encompassing a sequence within the center region of human Caspase 1 (cleaved Asp297) . The exact sequence is proprietary.
Purification	Purified by antigen-affinity chromatography.
Conjugation	Unconjugated
Note	<p>For laboratory research use only. Not for any clinical, therapeutic, or diagnostic use in humans or animals. Not for animal or human consumption.</p> <p>Purchasers shall not, and agree not to enable third parties to, analyze, copy, reverse engineer or otherwise attempt to determine the structure or sequence of the product.</p>



For full product information, images and publications, please visit our [website](#).

DATA IMAGES

GTX133447 WB Image

Treated (+) THP-1 whole cell extracts and conditioned medium (30 µg) were separated by 15% SDS-PAGE, and the membrane was blotted with Cleaved Caspase 1 (p20) antibody (GTX133447) diluted at 1:1000. The HRP-conjugated anti-rabbit IgG antibody (GTX213110-01) was used to detect the primary antibody.


GTX133447 WB Image

Untreated (-) and treated (+) THP-1 whole cell extracts and conditioned medium (30 µg) were separated by 15% SDS-PAGE, and the membranes were blotted with Caspase 1 (cleaved Asp297) antibody (GTX133447) diluted at 1:1000 and competitor's antibody (#4199) diluted at 1:1000. The HRP-conjugated anti-rabbit IgG antibody (GTX213110-01) was used to detect the primary antibody.

*The competitor is not affiliated with GeneTex and does not endorse this product.



For full product information, images and publications, please visit our [website](https://www.genetex.com).