

Src (phospho Tyr530) antibody

Cat. No. GTX133473

Host	Rabbit
Clonality	Polyclonal
Isotype	IgG
Applications	WB
Reactivity	Human, Mouse, Rat

References (1)

Package

100 µl, 25 µl

Applications

Application Note

*Optimal dilutions/concentrations should be determined by the researcher.

Suggested dilution	Recommended dilution
WB	1:500-1:3000

Not tested in other applications.

Calculated MW	60 kDa. (Note)
----------------------	----------------------------------

Product Note

This antibody is raised against human Src phosphorylated at Tyr530. Based on sequence homology, it is predicted to react with chicken Src phosphorylated at Tyr527, and it may cross with other Src family members such as YES1 and FYN proteins when phosphorylated at the equivalent sites. Based on sequence homology, this antibody may cross with other Src family members such as YES1 , FYN proteins when phosphorylated at the equivalent sites.

Properties

Form	Liquid
Buffer	PBS, 1% BSA, 20% Glycerol
Preservative	0.025% ProClin 300
Storage	Store as concentrated solution. Centrifuge briefly prior to opening vial. For short-term storage (1-2 weeks), store at 4°C. For long-term storage, aliquot and store at -20°C or below. Avoid multiple freeze-thaw cycles.
Concentration	0.18 mg/ml (Please refer to the vial label for the specific concentration.)
Immunogen	Carrier-protein conjugated synthetic peptide encompassing a sequence within the C-terminus region of Human Src (phospho Tyr529). The exact sequence is proprietary. The Tyr529 of human Src is equivalent to Tyr527 of chicken Src.
Purification	Purified by antigen-affinity chromatography.
Conjugation	Unconjugated

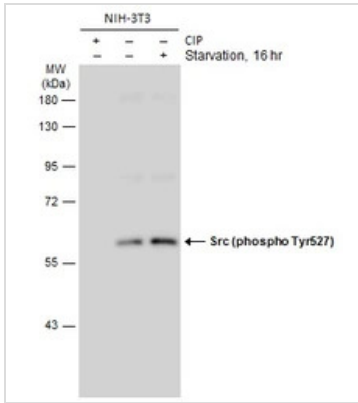


For full product information, images and publications, please visit our [website](#).

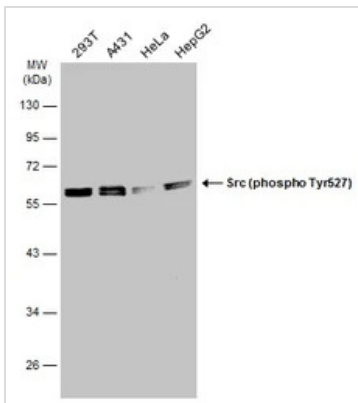
For laboratory research use only. Not for any clinical, therapeutic, or diagnostic use in humans or animals. Not for animal or human consumption.

Note

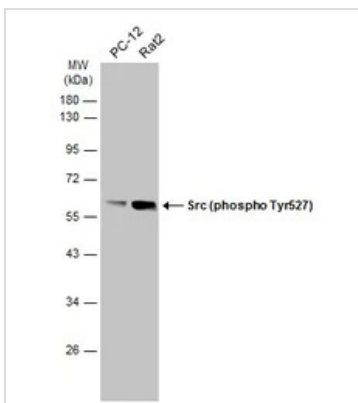
Purchasers shall not, and agree not to enable third parties to, analyze, copy, reverse engineer or otherwise attempt to determine the structure or sequence of the product.

DATA IMAGES

GTX133473 WB Image

Untreated (–) and treated (+) NIH-3T3 whole cell extracts (20 µg) were separated by 10% SDS-PAGE, and the membrane was blotted with Src (phospho Tyr527) antibody (GTX133473) diluted at 1:1000. The HRP-conjugated anti-rabbit IgG antibody (GTX213110-01) was used to detect the primary antibody.


GTX133473 WB Image

Various whole cell extracts (30 µg) were separated by 10% SDS-PAGE, and the membrane was blotted with Src (phospho Tyr527) antibody (GTX133473) diluted at 1:1000. The HRP-conjugated anti-rabbit IgG antibody (GTX213110-01) was used to detect the primary antibody.


GTX133473 WB Image

Various whole cell extracts (30 µg) were separated by 10% SDS-PAGE, and the membrane was blotted with Src (phospho Tyr527) antibody (GTX133473) diluted at 1:1000. The HRP-conjugated anti-rabbit IgG antibody (GTX213110-01) was used to detect the primary antibody.



For full product information, images and publications, please visit our [website](https://www.genetex.com).