

PDGF Receptor beta (phospho Tyr751) antibody

Cat. No. GTX133525

Host	Rabbit
Clonality	Polyclonal
Isotype	IgG
Applications	WB, ICC/IF
Reactivity	Human, Mouse

References (1)

Package

100 µl, 25 µl

Applications

Application Note

*Optimal dilutions/concentrations should be determined by the researcher.

Suggested dilution	Recommended dilution
WB	1:500-1:3000
ICC/IF	1:100-1:1000

Not tested in other applications.

Calculated MW 124 kDa. ([Note](#))

Properties

Form	Liquid
Buffer	PBS, 1% BSA, 20% Glycerol
Preservative	0.025% ProClin 300
Storage	Store as concentrated solution. Centrifuge briefly prior to opening vial. For short-term storage (1-2 weeks), store at 4°C. For long-term storage, aliquot and store at -20°C or below. Avoid multiple freeze-thaw cycles.
Concentration	0.12 mg/ml (Please refer to the vial label for the specific concentration.)
Immunogen	Carrier-protein conjugated synthetic peptide surrounding phospho Tyr751 of human PDGF Receptor beta. The exact sequence is proprietary.
Purification	Purified by antigen-affinity chromatography.
Conjugation	Unconjugated

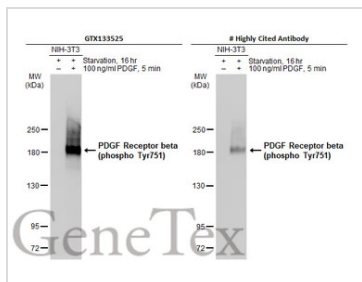
Note

For laboratory research use only. Not for any clinical, therapeutic, or diagnostic use in humans or animals. Not for animal or human consumption.

Purchasers shall not, and agree not to enable third parties to, analyze, copy, reverse engineer or otherwise attempt to determine the structure or sequence of the product.

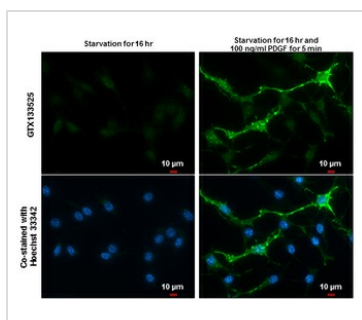


For full product information, images and publications, please visit our [website](#).

DATA IMAGES

GTX133525 WB Image

Untreated (–) and treated (+) NIH-3T3 whole cell extracts (30 µg) were separated by 5% SDS-PAGE, and the membranes were blotted with PDGF Receptor beta (phospho Tyr751) antibody (GTX133525) diluted at 1:1000 and competitor's antibody diluted at 1:1000. The HRP-conjugated anti-rabbit IgG antibody (GTX213110-01) was used to detect the primary antibody.

*The competitor is not affiliated with GeneTex and does not endorse this product.


GTX133525 ICC/IF Image

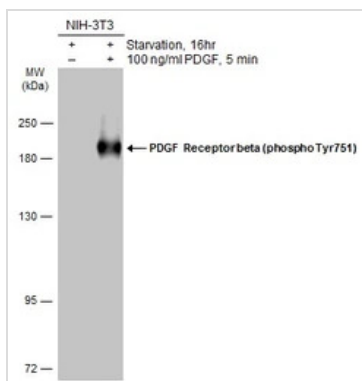
PDGF Receptor beta (phospho Tyr751) antibody detects PDGF Receptor beta (phospho Tyr751) protein at cell membrane and cytoplasm by immunofluorescent analysis.

Sample: Mock and treated NIH/3T3 cells were fixed in 4% paraformaldehyde at RT for 15 min.

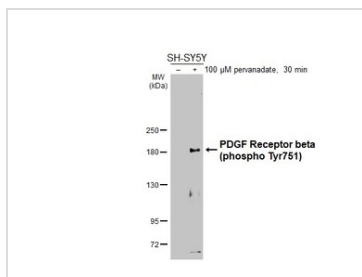
Green: PDGF Receptor beta (phospho Tyr751) protein stained by PDGF Receptor beta (phospho Tyr751) antibody (GTX133525) diluted at 1:1000.

Blue: Hoechst 33342 staining.

Scale bar = 10 µm.


GTX133525 WB Image

Untreated (–) and treated (+) NIH-3T3 whole cell extracts (30 µg) were separated by 7.5% SDS-PAGE, and the membrane was blotted with PDGF Receptor beta (phospho Tyr751) antibody (GTX133525) diluted at 1:1000. The HRP-conjugated anti-rabbit IgG antibody (GTX213110-01) was used to detect the primary antibody.


GTX133525 WB Image

Untreated (–) and treated (+) SH-SY5Y whole cell extracts (5 µg) were separated by 5% SDS-PAGE, and the membrane was blotted with PDGF Receptor beta (phospho Tyr751) antibody (GTX133525) diluted at 1:2000. The HRP-conjugated anti-rabbit IgG antibody (GTX213110-01) was used to detect the primary antibody.



For full product information, images and publications, please visit our [website](https://www.genetex.com).