

BTK (phospho Tyr551) antibody

Cat. No. GTX133592

Host	Rabbit
Clonality	Polyclonal
Isotype	IgG
Applications	WB
Reactivity	Human

Package
100 µl, 25 µl

Applications

Application Note

*Optimal dilutions/concentrations should be determined by the researcher.

Suggested dilution	Recommended dilution
WB	1:500-1:3000

Not tested in other applications.

Calculated MW 76 kDa. ([Note](#))

Properties

Form	Liquid
Buffer	PBS, 1% BSA, 20% Glycerol
Preservative	0.025% ProClin 300
Storage	Store as concentrated solution. Centrifuge briefly prior to opening vial. For short-term storage (1-2 weeks), store at 4°C. For long-term storage, aliquot and store at -20°C or below. Avoid multiple freeze-thaw cycles.
Concentration	0.57 mg/ml (Please refer to the vial label for the specific concentration.)
Immunogen	Carrier-protein conjugated synthetic peptide surrounding phospho Tyr551 of human BTK. The exact sequence is proprietary.
Purification	Purified by antigen-affinity chromatography.
Conjugation	Unconjugated

Note

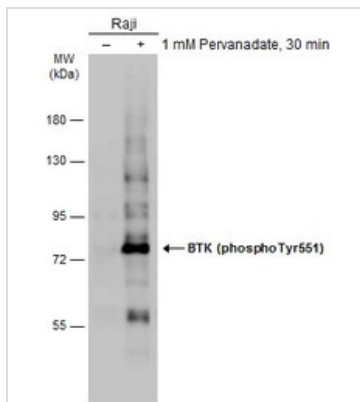
For laboratory research use only. Not for any clinical, therapeutic, or diagnostic use in humans or animals. Not for animal or human consumption.

Purchasers shall not, and agree not to enable third parties to, analyze, copy, reverse engineer or otherwise attempt to determine the structure or sequence of the product.



For full product information, images and publications, please visit our [website](#).

DATA IMAGES



GTX133592 WB Image

Untreated (–) and treated (+) Raji whole cell extracts (30 µg) were separated by 7.5% SDS-PAGE, and the membrane was blotted with BTK (phospho Tyr551) antibody (GTX133592) diluted at 1:1000. The HRP-conjugated anti-rabbit IgG antibody (GTX213110-01) was used to detect the primary antibody.



For full product information, images and publications, please visit our [website](#).