

## EGFR (phospho Tyr845) antibody

Cat. No. GTX133600

Host	Rabbit
Clonality	Polyclonal
Isotype	IgG
Application	WB, ICC/IF, IHC-P
Reactivity	Human

Reference ( 1 )  
Package  
100 µl, 25 µl

## APPLICATION

## Application Note

\*Optimal dilutions/concentrations should be determined by the researcher.

Suggested dilution	Recommended dilution
WB	1:500-1:3000
ICC/IF	1:100-1:1000
IHC-P	1:100-1:1000

Not tested in other applications.

Calculated MW 134 kDa. ( [Note](#) )

**Product Note** The full-length EGFR includes the 24 aa signal peptide that is cleaved during EGFR maturation. The Tyr845 of mature EGFR is equivalent to Tyr869 of uncleaved EGFR.

## PROPERTIES

Form	Liquid
Buffer	PBS, 1% BSA, 20% Glycerol
Preservative	0.025% ProClin 300
Storage	Store as concentrated solution. Centrifuge briefly prior to opening vial. For short-term storage (1-2 weeks), store at 4°C. For long-term storage, aliquot and store at -20°C or below. Avoid multiple freeze-thaw cycles.
Concentration	0.6 mg/ml (Please refer to the vial label for the specific concentration.)
Immunogen	Carrier-protein conjugated synthetic peptide surrounding phospho Tyr845 of human EGFR. The exact sequence is proprietary.
Purification	Purified by antigen-affinity chromatography.
Conjugation	Unconjugated



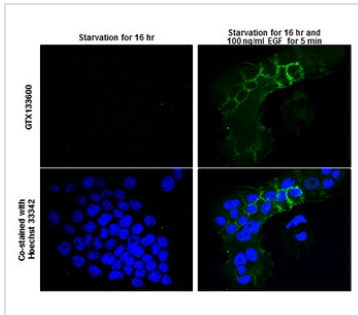
For full product information, images and publications, please visit our [website](#).

For laboratory research use only. Not for any clinical, therapeutic, or diagnostic use in humans or animals. Not for animal or human consumption.

## Note

Purchasers shall not, and agree not to enable third parties to, analyze, copy, reverse engineer or otherwise attempt to determine the structure or sequence of the product.

## DATA IMAGES



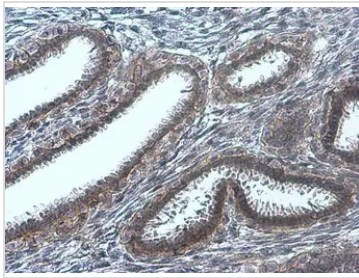
### GTx133600 ICC/IF Image

EGFR (phospho Tyr845) antibody detects EGFR (phospho Tyr845) protein at cell membrane by immunofluorescent analysis.

Sample: A431 cells were fixed in 4% paraformaldehyde at RT for 15 min.

Green: EGFR (phospho Tyr845) protein stained by EGFR (phospho Tyr845) antibody (GTx133600) diluted at 1:500.

Blue: Hoechst 33342 staining.



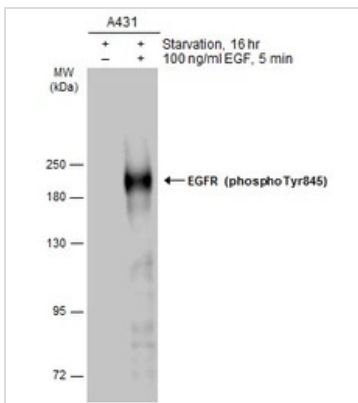
### GTx133600 IHC-P Image

EGFR (phospho Tyr845) antibody detects EGFR (phospho Tyr845) protein at cell membrane in human breast carcinoma by immunohistochemical analysis.

Sample: Paraffin-embedded human breast carcinoma.

EGFR (phospho Tyr845) antibody (GTx133600) diluted at 1:500.

Antigen Retrieval: Citrate buffer, pH 6.0, 15 min



### GTx133600 WB Image

Untreated (-) and treated (+) A431 whole cell extracts (30 µg) were separated by 7.5% SDS-PAGE, and the membrane was blotted with EGFR (phospho Tyr845) antibody (GTx133600) diluted at 1:2000. The HRP-conjugated anti-rabbit IgG antibody (GTx213110-01) was used to detect the primary antibody.



For full product information, images and publications, please visit our [website](https://www.genetex.com).