

Porcine circovirus type 2 / PCV2 replicase antibody

Cat. No. GTX133638

Host	Rabbit
Clonality	Polyclonal
Isotype	IgG
Applications	WB, ICC/IF
Reactivity	Porcine circovirus type 2

References (4)

★★★★★ Review (2)

Package

100 µl, 25 µl

Applications

Application Note

*Optimal dilutions/concentrations should be determined by the researcher.

Suggested dilution	Recommended dilution
WB	1:500-1:3000
ICC/IF	1:100-1:1000

Not tested in other applications.

Calculated MW 36 kDa. ([Note](#))

Properties

Form	Liquid
Buffer	PBS, 20% Glycerol
Preservative	0.025% ProClin 300
Storage	Store as concentrated solution. Centrifuge briefly prior to opening vial. For short-term storage (1-2 weeks), store at 4°C. For long-term storage, aliquot and store at -20°C or below. Avoid multiple freeze-thaw cycles.
Concentration	1.33 mg/ml (Please refer to the vial label for the specific concentration.)
Immunogen	Carrier-protein conjugated synthetic peptide encompassing a sequence within the C-terminus region of Porcine circovirus type 2 / PCV2 replicase (PCV2 virus (strain AUT1)). The exact sequence is proprietary.
Purification	Purified by antigen-affinity chromatography.
Conjugation	Unconjugated

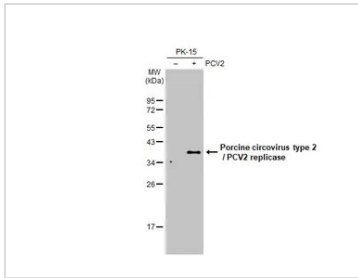
Note

For laboratory research use only. Not for any clinical, therapeutic, or diagnostic use in humans or animals. Not for animal or human consumption.

Purchasers shall not, and agree not to enable third parties to, analyze, copy, reverse engineer or otherwise attempt to determine the structure or sequence of the product.

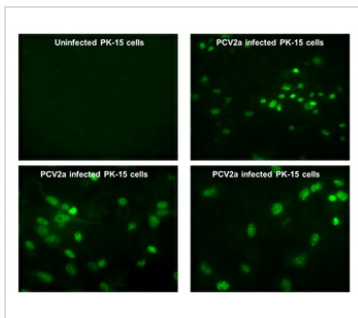
For full product information, images and publications, please visit our [website](#).

DATA IMAGES



GTX133638 WB Image

Non-infected (–) and infected (+) PK-15 whole cell extracts (15 µg) were separated by 12% SDS-PAGE, and the membrane was blotted with Porcine circovirus type 2 / PCV2 replicase antibody (GTX133638) diluted at 1:1000. The HRP-conjugated anti-rabbit IgG antibody (GTX213110-01) was used to detect the primary antibody.



GTX133638 ICC/IF Image

Porcine circovirus type 2 / PCV2 replicase antibody detects Porcine circovirus type 2 / PCV2 replicase protein by immunofluorescent analysis.

Sample: Uninfected and infected PK-15 cells were fixed in 4% paraformaldehyde at RT for 20 min.

Green: Porcine circovirus type 2 / PCV2 replicase stained by Porcine circovirus type 2 / PCV2 replicase antibody (GTX133638) diluted at 1:50.

Image courtesy of Dr. Karuppannan from Opriessnig Laboratory, Dept of Veterinary Diagnostic and Production Animal Medicine, College of Veterinary Medicine, Iowa State University, Ames, IA, USA.



For full product information, images and publications, please visit our [website](https://www.genetex.com).