

## PRRS virus Nsp1 alpha antibody

Cat. No. GTX133695

Host	Rabbit
Clonality	Polyclonal
Isotype	IgG
Applications	WB
Reactivity	PRRS virus

References ( 1 )

Package

100 µl, 25 µl

## Applications

## Application Note

\*Optimal dilutions/concentrations should be determined by the researcher.

Suggested dilution	Recommended dilution
WB	1:5000-1:20000

Not tested in other applications.

## Properties

Form	Liquid
Buffer	PBS, 20% Glycerol
Preservative	0.025% ProClin 300
Storage	Store as concentrated solution. Centrifuge briefly prior to opening vial. For short-term storage (1-2 weeks), store at 4°C. For long-term storage, aliquot and store at -20°C or below. Avoid multiple freeze-thaw cycles.
Concentration	0.83 mg/ml (Please refer to the vial label for the specific concentration.)
Immunogen	Full length PRRS virus Nsp1 alpha recombinant protein. (PRRS virus (strain VR-2332))
Purification	Purified by antigen-affinity chromatography.
Conjugation	Unconjugated

## Note

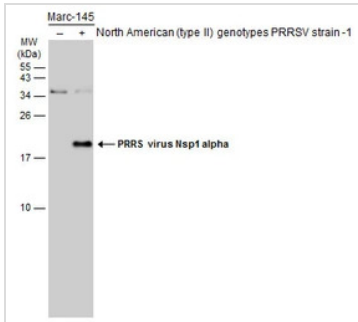
For laboratory research use only. Not for any clinical, therapeutic, or diagnostic use in humans or animals. Not for animal or human consumption.

Purchasers shall not, and agree not to enable third parties to, analyze, copy, reverse engineer or otherwise attempt to determine the structure or sequence of the product.



For full product information, images and publications, please visit our [website](#).

## DATA IMAGES



### GTX133695 WB Image

Non-infected (–) and infected (+) Marc-145 whole cell extracts (15 µg) were separated by 15% SDS-PAGE, and the membrane was blotted with PRRS virus Nsp1 alpha antibody (GTX133695) diluted at 1:10000. The HRP-conjugated anti-rabbit IgG antibody (GTX213110-01) was used to detect the primary antibody.



For full product information, images and publications, please visit our [website](#).