

PP2A alpha + PP2A beta antibody

Cat. No. GTX133709

Host	Rabbit
Clonality	Polyclonal
Isotype	IgG
Application	WB, IHC-P
Reactivity	Human, Mouse, Rat

Package
100 µl, 25 µl

APPLICATION

Application Note

*Optimal dilutions/concentrations should be determined by the researcher.

Suggested dilution	Recommended dilution
WB	1:500-1:3000
IHC-P	Assay dependent

Not tested in other applications.

Calculated MW 36 kDa. ([Note](#))

PROPERTIES

Form	Liquid
Buffer	PBS, 20% Glycerol
Preservative	0.025% ProClin 300
Storage	Store as concentrated solution. Centrifuge briefly prior to opening vial. For short-term storage (1-2 weeks), store at 4°C. For long-term storage, aliquot and store at -20°C or below. Avoid multiple freeze-thaw cycles.
Concentration	0.6 mg/ml (Please refer to the vial label for the specific concentration.)
Immunogen	Carrier-protein conjugated synthetic peptide encompassing a sequence within the N-terminus region of human PP2A alpha + PP2A beta. The exact sequence is proprietary.
Purification	Purified by antigen-affinity chromatography.
Conjugation	Unconjugated

Note

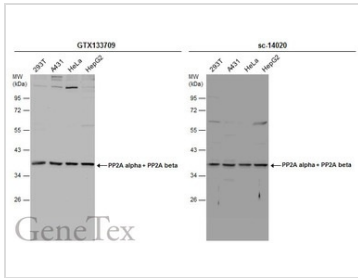
For laboratory research use only. Not for any clinical, therapeutic, or diagnostic use in humans or animals. Not for animal or human consumption.

Purchasers shall not, and agree not to enable third parties to, analyze, copy, reverse engineer or otherwise attempt to determine the structure or sequence of the product.



For full product information, images and publications, please visit our [website](#).

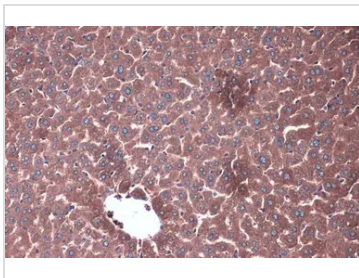
DATA IMAGES



GTX133709 WB Image

Various whole cell extracts (30 µg) were separated by 10% SDS-PAGE, and the membranes were blotted with PP2A alpha + PP2A beta antibody (GTX133709) diluted at 1:1000 and competitor's antibody (sc-14020) diluted at 1:100. The HRP-conjugated anti-rabbit IgG antibody (GTX213110-01) was used to detect the primary antibody.

*The competitor is not affiliated with GeneTex and does not endorse this product.



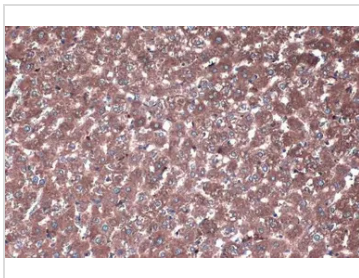
GTX133709 IHC-P Image

PP2A alpha + PP2A beta antibody detects PP2A alpha + PP2A beta protein at cytoplasm by immunohistochemical analysis.

Sample: Paraffin-embedded mouse liver.

PP2A alpha + PP2A beta stained by PP2A alpha + PP2A beta antibody (GTX133709) diluted at 1:1000.

Antigen Retrieval: Citrate buffer, pH 6.0, 15 min



GTX133709 IHC-P Image

PP2A alpha + PP2A beta antibody detects PP2A alpha + PP2A beta protein at cytoplasm by immunohistochemical analysis.

Sample: Paraffin-embedded rat liver.

PP2A alpha + PP2A beta stained by PP2A alpha + PP2A beta antibody (GTX133709) diluted at 1:1000.

Antigen Retrieval: Citrate buffer, pH 6.0, 15 min



For full product information, images and publications, please visit our [website](https://www.genetex.com).