

p35 antibody

Cat. No. GTX133713

| | |
|--------------|-------------------|
| Host | Rabbit |
| Clonality | Polyclonal |
| Isotype | IgG |
| Applications | WB, ICC/IF, IHC-P |
| Reactivity | Human, Mouse, Rat |

Package
100 µl, 25 µl

Applications

Application Note

*Optimal dilutions/concentrations should be determined by the researcher.

| Suggested dilution | Recommended dilution |
|--------------------|----------------------|
| WB | 1:500-1:3000 |
| ICC/IF | 1:100-1:1000 |
| IHC-P | 1:100-1:1000 |

Not tested in other applications.

Calculated MW 34 kDa. ([Note](#))

Properties

| | |
|---------------|----------------------------------------------------------------------------------------------------------------------------------------------------------------------------------------------------------------------------|
| Form | Liquid |
| Buffer | PBS, 20% Glycerol |
| Preservative | 0.025% ProClin 300 |
| Storage | Store as concentrated solution. Centrifuge briefly prior to opening vial. For short-term storage (1-2 weeks), store at 4°C. For long-term storage, aliquot and store at -20°C or below. Avoid multiple freeze-thaw cycles. |
| Concentration | 0.97 mg/ml (Please refer to the vial label for the specific concentration.) |
| Immunogen | Carrier-protein conjugated synthetic peptide encompassing a sequence within the C-terminus region of human p35. The exact sequence is proprietary. |
| Purification | Purified by antigen-affinity chromatography. |
| Conjugation | Unconjugated |

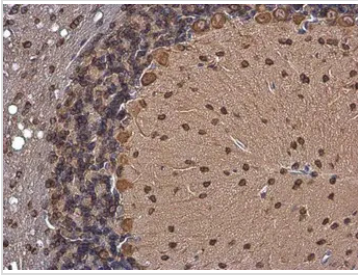
Note

For laboratory research use only. Not for any clinical, therapeutic, or diagnostic use in humans or animals. Not for animal or human consumption.

Purchasers shall not, and agree not to enable third parties to, analyze, copy, reverse engineer or otherwise attempt to determine the structure or sequence of the product.



For full product information, images and publications, please visit our [website](#).

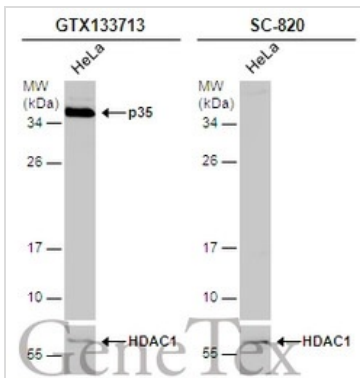
DATA IMAGES

GTX133713 IHC-P Image

p35 antibody detects p35 protein by immunohistochemical analysis.

Sample: Paraffin-embedded mouse brain.

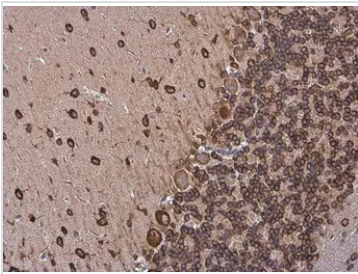
p35 stained by p35 antibody (GTX133713) diluted at 1:500.

Antigen Retrieval: Citrate buffer, pH 6.0, 15 min


GTX133713 WB Image

Whole cell extract (30 µg) was separated by 12% SDS-PAGE, and the membranes were blotted with p35 antibody (GTX133713) diluted at 1:1000 and competitor's antibody (SC-820) diluted by 1:100. The HRP-conjugated anti-rabbit IgG antibody (GTX213110-01) was used to detect the primary antibody.

*The competitor is not affiliated with GeneTex and does not endorse this product.

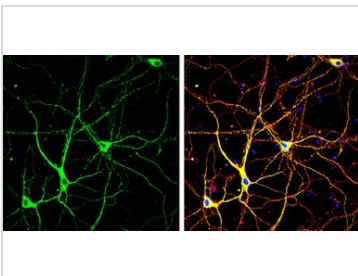

GTX133713 IHC-P Image

p35 antibody detects p35 protein by immunohistochemical analysis.

Sample: Paraffin-embedded rat brain.

p35 stained by p35 antibody (GTX133713) diluted at 1:500.

Antigen Retrieval: Citrate buffer, pH 6.0, 15 min


GTX133713 ICC/IF Image

p35 antibody detects p35 protein by immunofluorescent analysis.

Sample: DIV10 rat E18 primary cortical neuron cells were fixed in 4% paraformaldehyde at RT for 15 min.

Green: p35 stained by p35 antibody (GTX133713) diluted at 1:500.

Red: alpha Tubulin, stained by alpha Tubulin antibody [GT114] (GTX628802) diluted at 1:500.

Blue: Fluoroshield with DAPI (GTX30920).



For full product information, images and publications, please visit our [website](https://www.genetex.com).