

n-Myc antibody

Cat. No. GTX133721

Host	Rabbit
Clonality	Polyclonal
Isotype	IgG
Applications	WB
Reactivity	Human, Mouse, Rat

References (1)

Package

100 µl, 25 µl

Applications

Application Note

*Optimal dilutions/concentrations should be determined by the researcher.

Suggested dilution	Recommended dilution
WB	1:500-1:3000

Not tested in other applications.

Calculated MW 50 kDa. ([Note](#))

Properties

Form	Liquid
Buffer	PBS, 20% Glycerol
Preservative	0.025% ProClin 300
Storage	Store as concentrated solution. Centrifuge briefly prior to opening vial. For short-term storage (1-2 weeks), store at 4°C. For long-term storage, aliquot and store at -20°C or below. Avoid multiple freeze-thaw cycles.
Concentration	0.62 mg/ml (Please refer to the vial label for the specific concentration.)
Immunogen	Carrier-protein conjugated synthetic peptide encompassing a sequence within the C-terminus region of human n-Myc. The exact sequence is proprietary.
Purification	Purified by antigen-affinity chromatography.
Conjugation	Unconjugated

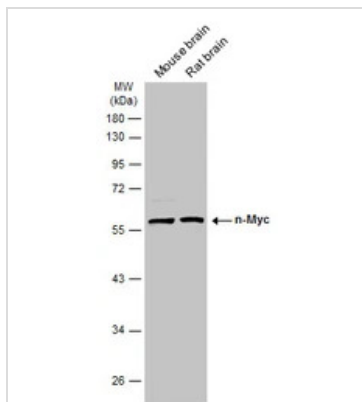
Note

For laboratory research use only. Not for any clinical, therapeutic, or diagnostic use in humans or animals. Not for animal or human consumption.

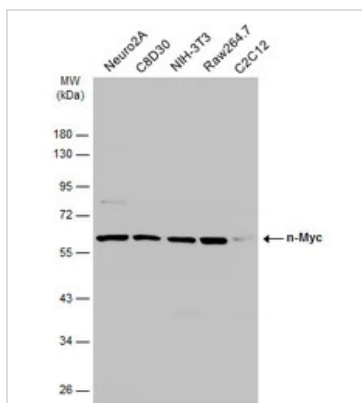
Purchasers shall not, and agree not to enable third parties to, analyze, copy, reverse engineer or otherwise attempt to determine the structure or sequence of the product.



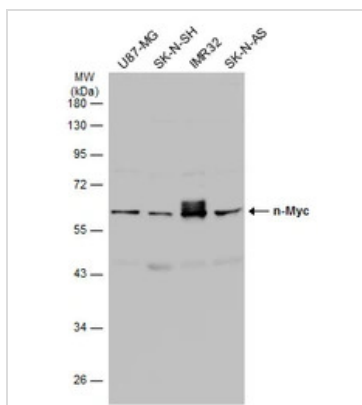
For full product information, images and publications, please visit our [website](#).

DATA IMAGES

GTX133721 WB Image

Various tissue extracts (50 μ g) were separated by 10% SDS-PAGE, and the membrane was blotted with n-Myc antibody (GTX133721) diluted at 1:1000. The HRP-conjugated anti-rabbit IgG antibody (GTX213110-01) was used to detect the primary antibody.


GTX133721 WB Image

Various whole cell extracts (30 μ g) were separated by 10% SDS-PAGE, and the membrane was blotted with n-Myc antibody (GTX133721) diluted at 1:1000. The HRP-conjugated anti-rabbit IgG antibody (GTX213110-01) was used to detect the primary antibody.


GTX133721 WB Image

Various whole cell extracts (30 μ g) were separated by 10% SDS-PAGE, and the membrane was blotted with n-Myc antibody (GTX133721) diluted at 1:1000. The HRP-conjugated anti-rabbit IgG antibody (GTX213110-01) was used to detect the primary antibody.



For full product information, images and publications, please visit our [website](http://www.genetex.com).