

SMARCA2 antibody

Cat. No. GTX133724

Host	Rabbit
Clonality	Polyclonal
Isotype	IgG
Application	WB, ICC/IF, IHC-P
Reactivity	Human, Mouse, Rat

Package
100 µl, 25 µl

APPLICATION

Application Note

*Optimal dilutions/concentrations should be determined by the researcher.

Suggested dilution	Recommended dilution
WB	1:500-1:3000
ICC/IF	1:100-1:1000
IHC-P	1:100-1:1000

Not tested in other applications.

Calculated MW 181 kDa. ([Note](#))

PROPERTIES

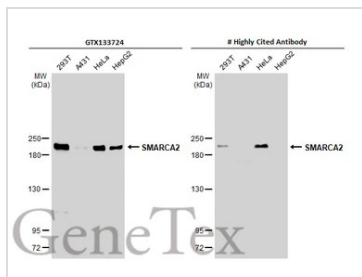
Form	Liquid
Buffer	PBS, 20% Glycerol
Preservative	0.025% ProClin 300
Storage	Store as concentrated solution. Centrifuge briefly prior to opening vial. For short-term storage (1-2 weeks), store at 4°C. For long-term storage, aliquot and store at -20°C or below. Avoid multiple freeze-thaw cycles.
Concentration	0.89 mg/ml (Please refer to the vial label for the specific concentration.)
Immunogen	Carrier-protein conjugated synthetic peptide encompassing a sequence within the N-terminus region of human SMARCA2. The exact sequence is proprietary.
Purification	Purified by antigen-affinity chromatography.
Conjugation	Unconjugated

Note For laboratory research use only. Not for any clinical, therapeutic, or diagnostic use in humans or animals. Not for animal or human consumption.

Purchasers shall not, and agree not to enable third parties to, analyze, copy, reverse engineer or otherwise attempt to determine the structure or sequence of the product.

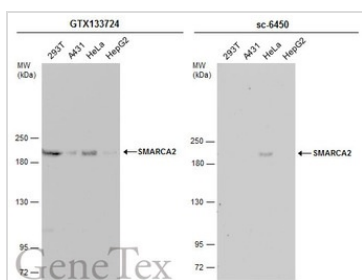


For full product information, images and publications, please visit our [website](#).

DATA IMAGES

GTX133724 WB Image

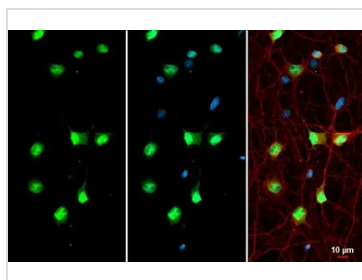
Various whole cell extracts (30 µg) were separated by 5% SDS-PAGE, and the membranes were blotted with SMARCA2 antibody (GTX133724) diluted at 1:1000 and competitor's antibody diluted at 1:1000. The HRP-conjugated anti-rabbit IgG antibody (GTX213110-01) was used to detect the primary antibody.

*The competitor is not affiliated with GeneTex and does not endorse this product.


GTX133724 WB Image

Various whole cell extracts (30 µg) were separated by 5% SDS-PAGE, and the membranes were blotted with SMARCA2 antibody (GTX133724) diluted at 1:1000 and competitor's antibody (sc-6450) diluted at 1:100. The HRP-conjugated anti-rabbit IgG antibody (GTX213110-01) was used to detect the primary antibody.

*The competitor is not affiliated with GeneTex and does not endorse this product.

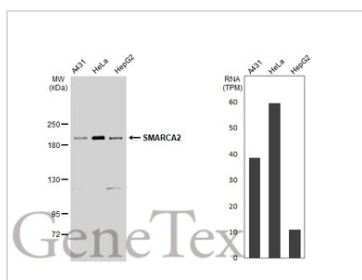

GTX133724 ICC/IF Image

SMARCA2 antibody detects SMARCA2 protein at nucleolus by immunofluorescent analysis.

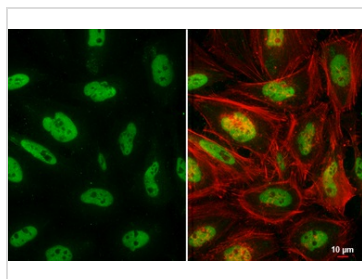
Sample: DIV10 rat hippocampal neuron cells were fixed in 4% paraformaldehyde at RT for 15 min.

Green: SMARCA2 stained by SMARCA2 antibody (GTX133724) diluted at 1:500.

Red: Tau, a marker, stained by Tau antibody [GT287] (GTX634809) diluted at 1:500.


GTX133724 WB Image

Various whole cell extracts (30 µg) were separated by 5% SDS-PAGE, and the membrane was blotted with SMARCA2 antibody (GTX133724) diluted at 1:1000. The HRP-conjugated anti-rabbit IgG antibody (GTX213110-01) was used to detect the primary antibody. Corresponding RNA expression data for the same cell lines are based on Human Protein Atlas program.


GTX133724 ICC/IF Image

SMARCA2 antibody detects SMARCA2 protein at nucleus by immunofluorescent analysis.

Sample: HeLa cells were fixed in 4% paraformaldehyde at RT for 15 min.

Green: SMARCA2 stained by SMARCA2 antibody (GTX133724) diluted at 1:500.

Red: phalloidin, a cytoskeleton marker, diluted at 1:200.

Scale bar= 10 µm.



For full product information, images and publications, please visit our [website](https://www.genetex.com).