

TOMM20 antibody

Cat. No. GTX133756

Host	Rabbit
Clonality	Polyclonal
Isotype	IgG
Applications	WB, ICC/IF, IHC-P
Reactivity	Human, Mouse, Rat

References (5)

★★★★☆ Review (4)

Package

100 µl, 25 µl

Applications

Application Note

*Optimal dilutions/concentrations should be determined by the researcher.

Suggested dilution	Recommended dilution
WB	1:500-1:3000
ICC/IF	Assay dependent
IHC-P	1:100-1:1000

Not tested in other applications.

Calculated MW 16 kDa. ([Note](#))

Properties

Form	Liquid
Buffer	PBS, 1% BSA, 20% Glycerol
Preservative	0.025% ProClin 300
Storage	Store as concentrated solution. Centrifuge briefly prior to opening vial. For short-term storage (1-2 weeks), store at 4°C. For long-term storage, aliquot and store at -20°C or below. Avoid multiple freeze-thaw cycles.
Concentration	0.21 mg/ml (Please refer to the vial label for the specific concentration.)
Immunogen	Full length Human TOMM20 recombinant protein.
Purification	Purified by antigen-affinity chromatography.
Conjugation	Unconjugated

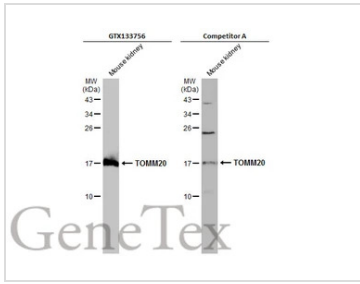
Note

For laboratory research use only. Not for any clinical, therapeutic, or diagnostic use in humans or animals. Not for animal or human consumption.

Purchasers shall not, and agree not to enable third parties to, analyze, copy, reverse engineer or otherwise attempt to determine the structure or sequence of the product.

For full product information, images and publications, please visit our [website](#).

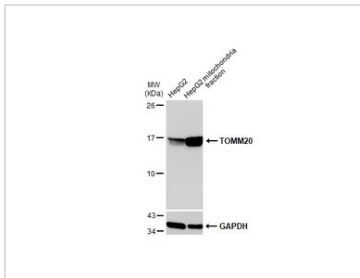
DATA IMAGES



GTX133756 WB Image

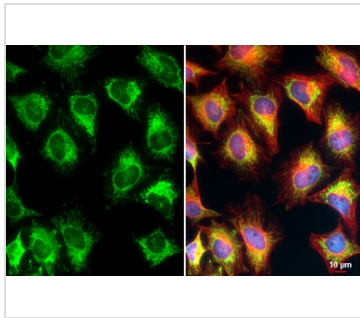
Mouse tissue extract (50 µg) was separated by 15% SDS-PAGE, and the membranes were blotted with TOMM20 antibody (GTX133756) diluted at 1:1000 and competitor's antibody (Competitor A) diluted at 1:500. The HRP-conjugated anti-rabbit IgG antibody (GTX213110-01) was used to detect the primary antibody.

*The competitor is not affiliated with GeneTex and does not endorse this product.



GTX133756 WB Image

HepG2 and mitochondria extracts (30 µg) were separated by SDS-PAGE, and the membrane was blotted with TOMM20 antibody (GTX133756) diluted at 1:1000. The HRP-conjugated anti-rabbit IgG antibody (GTX213110-01) was used to detect the primary antibody.



GTX133756 ICC/IF Image

TOMM20 antibody detects TOMM20 protein at mitochondria by immunofluorescent analysis.

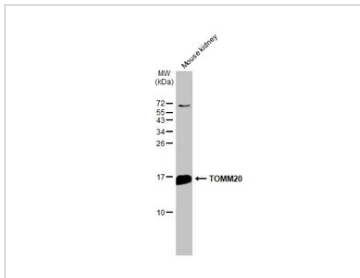
Sample: HeLa cells were fixed in 4% paraformaldehyde at RT for 15 min.

Green: TOMM20 stained by TOMM20 antibody (GTX133756) diluted at 1:500.

Red: alpha Tubulin, a cytoskeleton marker, stained by alpha Tubulin antibody [GT114] (GTX628802) diluted at 1:1000.

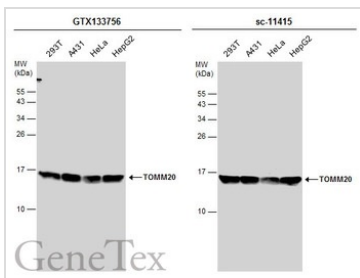
Blue: Fluoroshield with DAPI (GTX30920).

Scale bar= 10µm.



GTX133756 WB Image

Mouse tissue extract (50 µg) was separated by 15% SDS-PAGE, and the membrane was blotted with TOMM20 antibody (GTX133756) diluted at 1:1000. The HRP-conjugated anti-rabbit IgG antibody (GTX213110-01) was used to detect the primary antibody.



GTX133756 WB Image

Various whole cell extracts (30 µg) were separated by 15% SDS-PAGE, and the membranes were blotted with TOMM20 antibody (GTX133756) diluted at 1:1000 and competitor's antibody (sc-11415) diluted at 1:1000. The HRP-conjugated anti-rabbit IgG antibody (GTX213110-01) was used to detect the primary antibody.

*The competitor is not affiliated with GeneTex and does not endorse this product.



For full product information, images and publications, please visit our [website](#).