

## PLCB2 antibody

Cat. No. GTX133765

Host	Rabbit
Clonality	Polyclonal
Isotype	IgG
Applications	WB, ICC/IF, IHC-P, IHC-Fr
Reactivity	Human, Mouse

References ( 1 )

Package

100 µl, 25 µl

## Applications

## Application Note

\*Optimal dilutions/concentrations should be determined by the researcher.

Suggested dilution	Recommended dilution
WB	1:500-1:3000
ICC/IF	1:100-1:1000
IHC-P	1:100-1:1000
IHC-Fr	Assay dependent

Not tested in other applications.

Calculated MW 134 kDa. ( [Note](#) )

## Properties

Form	Liquid
Buffer	PBS, 20% Glycerol
Preservative	0.025% ProClin 300
Storage	Store as concentrated solution. Centrifuge briefly prior to opening vial. For short-term storage (1-2 weeks), store at 4°C. For long-term storage, aliquot and store at -20°C or below. Avoid multiple freeze-thaw cycles.
Concentration	0.71 mg/ml (Please refer to the vial label for the specific concentration.)
Immunogen	Recombinant protein encompassing a sequence within the C-terminus region of human PLCB2. The exact sequence is proprietary.
Purification	Purified by antigen-affinity chromatography.
Conjugation	Unconjugated

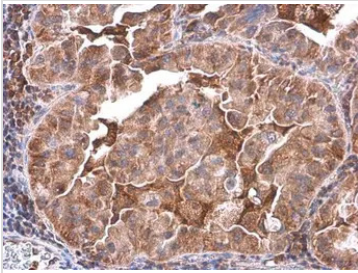


For full product information, images and publications, please visit our [website](#).

For laboratory research use only. Not for any clinical, therapeutic, or diagnostic use in humans or animals. Not for animal or human consumption.

**Note**

Purchasers shall not, and agree not to enable third parties to, analyze, copy, reverse engineer or otherwise attempt to determine the structure or sequence of the product.

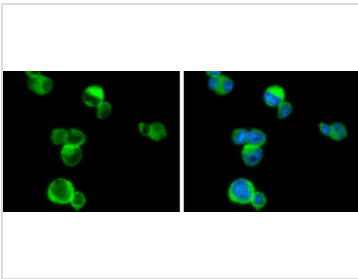
**DATA IMAGES**

**GTX133765 IHC-P Image**

PLCB2 antibody detects PLCB2 protein at cytoplasm by immunohistochemical analysis.

Sample: Paraffin-embedded human lung cancer.

PLCB2 stained by PLCB2 antibody (GTX133765) diluted at 1:500.

Antigen Retrieval: Citrate buffer, pH 6.0, 15 min

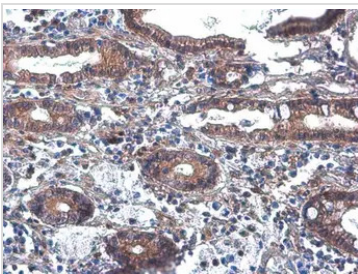

**GTX133765 ICC/IF Image**

PLCB2 antibody detects PLCB2 protein at cytoplasm by immunofluorescent analysis.

Sample: THP-1 cells were fixed in 4% paraformaldehyde at RT for 15 min.

Green: PLCB2 stained by PLCB2 antibody (GTX133765) diluted at 1:500.

Blue: Fluoroshield with DAPI (GTX30920).

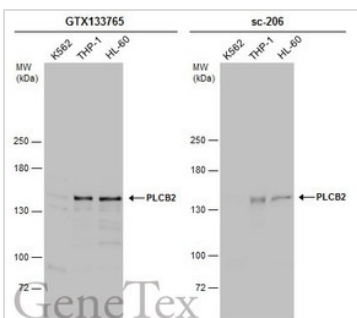

**GTX133765 IHC-P Image**

PLCB2 antibody detects PLCB2 protein at cytoplasm by immunohistochemical analysis.

Sample: Paraffin-embedded human colon cancer.

PLCB2 stained by PLCB2 antibody (GTX133765) diluted at 1:500.

Antigen Retrieval: Citrate buffer, pH 6.0, 15 min


**GTX133765 WB Image**

Various whole cell extracts (30 µg) were separated by 5% SDS-PAGE, and the membranes were blotted with PLCB2 antibody (GTX133765) diluted at 1:1000 and competitor's antibody (sc-206) diluted at 1:100. The HRP-conjugated anti-rabbit IgG antibody (GTX213110-01) was used to detect the primary antibody.

\*The competitor is not affiliated with GeneTex and does not endorse this product.



For full product information, images and publications, please visit our [website](https://www.genetex.com).