

# RASGRF1 antibody

**Cat. No. GTX133775**

<b>Host</b>	Rabbit
<b>Clonality</b>	Polyclonal
<b>Isotype</b>	IgG
<b>Applications</b>	WB, IHC-P
<b>Reactivity</b>	Mouse, Rat

**Package**  
100 µl, 25 µl

## Applications

### Application Note

\*Optimal dilutions/concentrations should be determined by the researcher.

Suggested dilution	Recommended dilution
WB	1:500-1:3000
IHC-P	Assay dependent

Not tested in other applications.

**Calculated MW** 143 kDa. ([Note](#))

## Properties

<b>Form</b>	Liquid
<b>Buffer</b>	PBS, 20% Glycerol
<b>Preservative</b>	0.025% ProClin 300
<b>Storage</b>	Store as concentrated solution. Centrifuge briefly prior to opening vial. For short-term storage (1-2 weeks), store at 4°C. For long-term storage, aliquot and store at -20°C or below. Avoid multiple freeze-thaw cycles.
<b>Concentration</b>	1.12 mg/ml (Please refer to the vial label for the specific concentration.)
<b>Immunogen</b>	Carrier-protein conjugated synthetic peptide encompassing a sequence within the C-terminus region of Rat RASGRF1. The exact sequence is proprietary.
<b>Purification</b>	Purified by antigen-affinity chromatography.
<b>Conjugation</b>	Unconjugated

**Note**

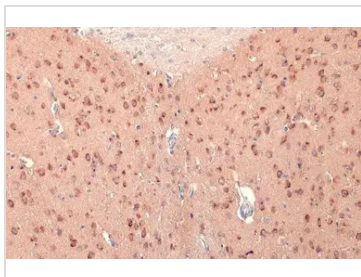
For laboratory research use only. Not for any clinical, therapeutic, or diagnostic use in humans or animals. Not for animal or human consumption.

Purchasers shall not, and agree not to enable third parties to, analyze, copy, reverse engineer or otherwise attempt to determine the structure or sequence of the product.



For full product information, images and publications, please visit our [website](#).

## DATA IMAGES



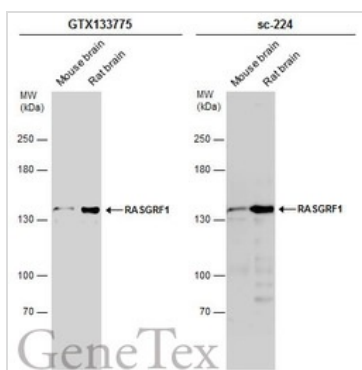
### GTX133775 IHC-P Image

RASGRF1 antibody detects RASGRF1 protein at cytoplasm by immunohistochemical analysis.

Sample: Paraffin-embedded mouse brain.

RASGRF1 stained by RASGRF1 antibody (GTX133775) diluted at 1:500.

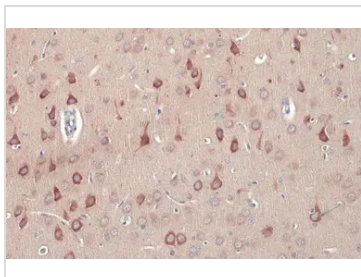
Antigen Retrieval: Citrate buffer, pH 6.0, 15 min



### GTX133775 WB Image

Various tissue extracts (30 µg) were separated by 5% SDS-PAGE, and the membranes were blotted with RASGRF1 antibody (GTX133775) diluted at 1:1000 and competitor's antibody (sc-224) diluted at 1:200. The HRP-conjugated anti-rabbit IgG antibody (GTX213110-01) was used to detect the primary antibody.

\*The competitor is not affiliated with GeneTex and does not endorse this product.



### GTX133775 IHC-P Image

RASGRF1 antibody detects RASGRF1 protein at cytoplasm by immunohistochemical analysis.

Sample: Paraffin-embedded rat brain.

RASGRF1 stained by RASGRF1 antibody (GTX133775) diluted at 1:500.

Antigen Retrieval: Citrate buffer, pH 6.0, 15 min



For full product information, images and publications, please visit our [website](https://www.genetex.com).