

PAX5 antibody

Cat. No. GTX133777

Host	Rabbit
Clonality	Polyclonal
Isotype	IgG
Application	WB, IHC-P
Reactivity	Human, Mouse, Rat

★★★★★ Review (1)

Package
100 µl, 25 µl

APPLICATION

Application Note

*Optimal dilutions/concentrations should be determined by the researcher.

Suggested dilution	Recommended dilution
WB	1:500-1:3000
IHC-P	1:100-1:1000

Not tested in other applications.

Calculated MW 42 kDa. ([Note](#))

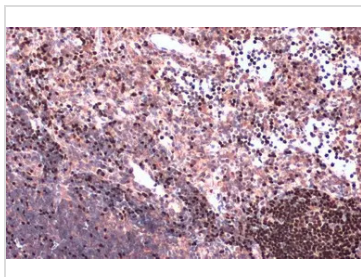
PROPERTIES

Form	Liquid
Buffer	PBS, 20% Glycerol
Preservative	0.025% ProClin 300
Storage	Store as concentrated solution. Centrifuge briefly prior to opening vial. For short-term storage (1-2 weeks), store at 4°C. For long-term storage, aliquot and store at -20°C or below. Avoid multiple freeze-thaw cycles.
Concentration	0.64 mg/ml (Please refer to the vial label for the specific concentration.)
Immunogen	Carrier-protein conjugated synthetic peptide encompassing a sequence within the C-terminus region of human PAX5. The exact sequence is proprietary.
Purification	Purified by antigen-affinity chromatography.
Conjugation	Unconjugated
Note	<p>For laboratory research use only. Not for any clinical, therapeutic, or diagnostic use in humans or animals. Not for animal or human consumption.</p> <p>Purchasers shall not, and agree not to enable third parties to, analyze, copy, reverse engineer or otherwise attempt to determine the structure or sequence of the product.</p>



For full product information, images and publications, please visit our [website](#).

DATA IMAGES



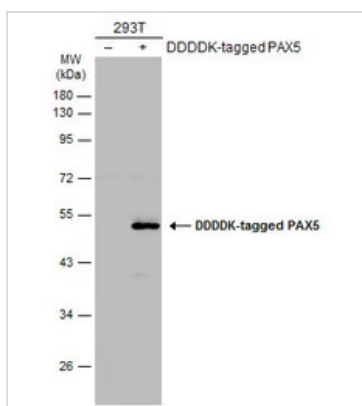
GTX133777 IHC-P Image

PAX5 antibody detects PAX5 protein at nucleus by immunohistochemical analysis.

Sample: Paraffin-embedded rat lymph node.

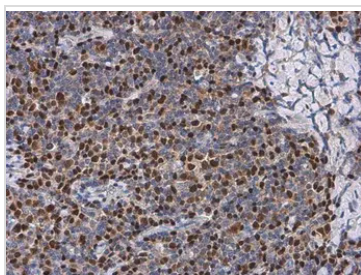
PAX5 stained by PAX5 antibody (GTX133777) diluted at 1:1000.

Antigen Retrieval: Citrate buffer, pH 6.0, 15 min



GTX133777 WB Image

Non-transfected (-) and transfected (+) 293T whole cell extracts (30 µg) were separated by 10% SDS-PAGE, and the membrane was blotted with PAX5 antibody (GTX133777) diluted at 1:5000. The HRP-conjugated anti-rabbit IgG antibody (GTX213110-01) was used to detect the primary antibody.



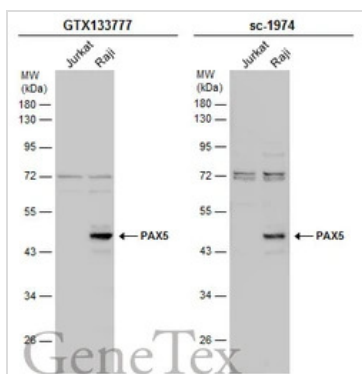
GTX133777 IHC-P Image

PAX5 antibody detects PAX5 protein at nucleus by immunohistochemical analysis.

Sample: Paraffin-embedded human tonsil.

PAX5 stained by PAX5 antibody (GTX133777) diluted at 1:500.

Antigen Retrieval: Citrate buffer, pH 6.0, 15 min



GTX133777 WB Image

Various whole cell extracts (30 µg) were separated by 10% SDS-PAGE, and the membranes were blotted with PAX5 antibody (GTX133777) diluted at 1:1000 and competitor's antibody (sc-1974) diluted at 1:100. The HRP-conjugated anti-rabbit IgG antibody (GTX213110-01) was used to detect the primary antibody.

*The competitor is not affiliated with GeneTex and does not endorse this product.



For full product information, images and publications, please visit our [website](https://www.genetex.com).