

TOMM40 antibody

Cat. No. GTX133780

Host	Rabbit
Clonality	Polyclonal
Isotype	IgG
Application	WB, IHC-P, PLA
Reactivity	Human, Mouse, Rat

Reference (2)

Package

100 µl, 25 µl

APPLICATION

Application Note

*Optimal dilutions/concentrations should be determined by the researcher.

Suggested dilution	Recommended dilution
WB	1:500-1:3000
IHC-P	1:100-1:1000
PLA	Assay dependent

Not tested in other applications.

Calculated MW 38 kDa. ([Note](#))

PROPERTIES

Form	Liquid
Buffer	PBS, 20% Glycerol
Preservative	0.025% ProClin 300
Storage	Store as concentrated solution. Centrifuge briefly prior to opening vial. For short-term storage (1-2 weeks), store at 4°C. For long-term storage, aliquot and store at -20°C or below. Avoid multiple freeze-thaw cycles.
Concentration	1.34 mg/ml (Please refer to the vial label for the specific concentration.)
Immunogen	Carrier-protein conjugated synthetic peptide encompassing a sequence within the C-terminus region of human TOMM40. The exact sequence is proprietary.
Purification	Purified by antigen-affinity chromatography.
Conjugation	Unconjugated

Note

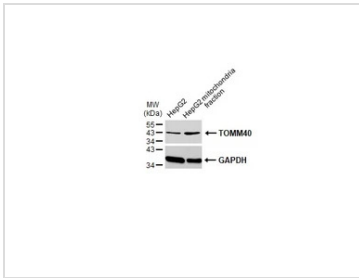
For laboratory research use only. Not for any clinical, therapeutic, or diagnostic use in humans or animals. Not for animal or human consumption.

Purchasers shall not, and agree not to enable third parties to, analyze, copy, reverse engineer or otherwise attempt to determine the structure or sequence of the product.



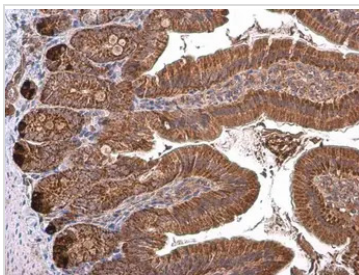
For full product information, images and publications, please visit our [website](#).

DATA IMAGES



GTX133780 WB Image

HepG2 and mitochondria extracts (30 µg) were separated by SDS-PAGE, and the membrane was blotted with TOMM40 antibody (GTX133780) diluted at 1:1000. The HRP-conjugated anti-rabbit IgG antibody (GTX213110-01) was used to detect the primary antibody.



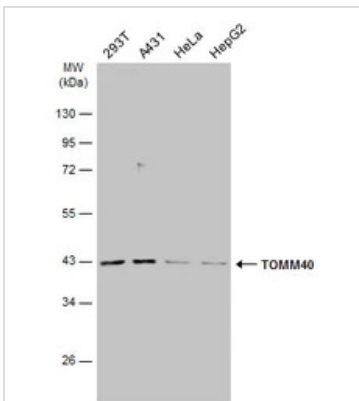
GTX133780 IHC-P Image

TOMM40 antibody detects TOMM40 protein at mitochondria by immunohistochemical analysis.

Sample: Paraffin-embedded mouse duodenum.

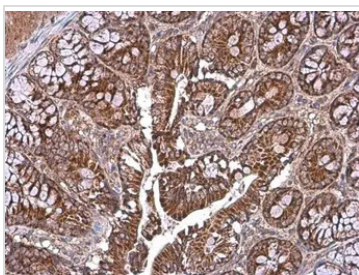
TOMM40 stained by TOMM40 antibody (GTX133780) diluted at 1:2000.

Antigen Retrieval: Citrate buffer, pH 6.0, 15 min



GTX133780 WB Image

Various whole cell extracts (30 µg) were separated by 10% SDS-PAGE, and the membrane was blotted with TOMM40 antibody (GTX133780) diluted at 1:1000. The HRP-conjugated anti-rabbit IgG antibody (GTX213110-01) was used to detect the primary antibody.



GTX133780 IHC-P Image

TOMM40 antibody detects TOMM40 protein at mitochondria by immunohistochemical analysis.

Sample: Paraffin-embedded rat colon.

TOMM40 stained by TOMM40 antibody (GTX133780) diluted at 1:2000.

Antigen Retrieval: Citrate buffer, pH 6.0, 15 min



For full product information, images and publications, please visit our [website](https://www.genetex.com).