

## G protein beta antibody

Cat. No. GTX133801

Host	Rabbit
Clonality	Polyclonal
Isotype	IgG
Application	WB, ICC/IF, IHC-P
Reactivity	Human

Package  
100 µl, 25 µl

## APPLICATION

## Application Note

\*Optimal dilutions/concentrations should be determined by the researcher.

Suggested dilution	Recommended dilution
WB	1:500-1:3000
ICC/IF	1:100-1:1000
IHC-P	1:100-1:1000

Not tested in other applications.

Calculated MW 37 kDa. ([Note](#))

## PROPERTIES

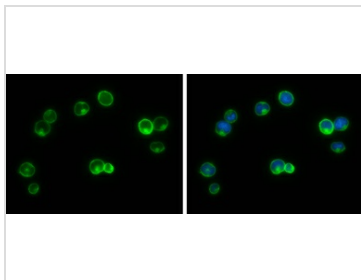
Form	Liquid
Buffer	PBS, 20% Glycerol
Preservative	0.025% ProClin 300
Storage	Store as concentrated solution. Centrifuge briefly prior to opening vial. For short-term storage (1-2 weeks), store at 4°C. For long-term storage, aliquot and store at -20°C or below. Avoid multiple freeze-thaw cycles.
Concentration	0.93 mg/ml (Please refer to the vial label for the specific concentration.)
Immunogen	Carrier-protein conjugated synthetic peptide encompassing a sequence within the C-terminus region of mouse G protein beta. The exact sequence is proprietary.
Purification	Purified by antigen-affinity chromatography.
Conjugation	Unconjugated

**Note** For laboratory research use only. Not for any clinical, therapeutic, or diagnostic use in humans or animals. Not for animal or human consumption.

Purchasers shall not, and agree not to enable third parties to, analyze, copy, reverse engineer or otherwise attempt to determine the structure or sequence of the product.



For full product information, images and publications, please visit our [website](#).

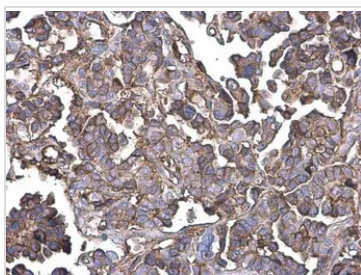
**DATA IMAGES**

**GTx133801 ICC/IF Image**

G protein beta antibody detects G protein beta protein at cell membrane and cytoplasm by immunofluorescent analysis.

Sample: Jurkat cells were fixed in 4% paraformaldehyde at RT for 15 min.

Green: G protein beta protein stained by G protein beta antibody (GTx133801) diluted at 1:500.

Blue: Hoechst 33342 staining.

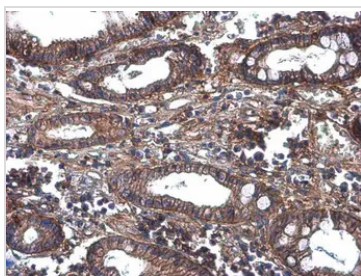

**GTx133801 IHC-P Image**

G protein beta antibody detects G protein beta protein at cell membrane and cytoplasm by immunohistochemical analysis.

Sample: Paraffin-embedded human ovarian cancer.

G protein beta stained by G protein beta antibody (GTx133801) diluted at 1:500.

Antigen Retrieval: Citrate buffer, pH 6.0, 15 min

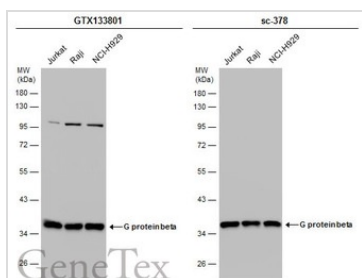

**GTx133801 IHC-P Image**

G protein beta antibody detects G protein beta protein at cell membrane and cytoplasm by immunohistochemical analysis.

Sample: Paraffin-embedded human colon cancer.

G protein beta stained by G protein beta antibody (GTx133801) diluted at 1:500.

Antigen Retrieval: Citrate buffer, pH 6.0, 15 min


**GTx133801 WB Image**

Various whole cell extracts (30 µg) were separated by 10% SDS-PAGE, and the membranes were blotted with G protein beta antibody (GTx133801) diluted at 1:1000 and competitor's antibody (sc-378) diluted at 1:1000. The HRP-conjugated anti-rabbit IgG antibody (GTx213110-01) was used to detect the primary antibody.

\*The competitor is not affiliated with GeneTex and does not endorse this product.



For full product information, images and publications, please visit our [website](https://www.genetex.com).