

PTGER3 antibody

Cat. No. GTX13381

| | |
|---------------------|--------------------|
| Host | Rabbit |
| Clonality | Polyclonal |
| Isotype | IgG |
| Applications | IHC-P |
| Reactivity | Human, Monkey, Bat |

Package

25 µg

Applications

Application Note

*Optimal dilutions/concentrations should be determined by the researcher.

| Suggested dilution | Recommended dilution |
|--------------------|----------------------|
| IHC-P | 1 - 3 µg/ml |

Not tested in other applications.

Properties

| | |
|----------------------|--|
| Form | Liquid |
| Buffer | PBS |
| Preservative | 0.1% Sodium azide |
| Storage | Store as concentrated solution. Centrifuge briefly prior to opening vial. For short-term storage (1-2 weeks), store at 4°C. For long-term storage, aliquot and store at -20°C or below. Avoid multiple freeze-thaw cycles. |
| Concentration | 1 mg/ml (Please refer to the vial label for the specific concentration.) |
| Immunogen | Synthetic 17 amino acid peptide from 1st cytoplasmic domain of human PTGER3 / EP3. |
| Purification | Purified by affinity chromatography |
| Conjugation | Unconjugated |

Note

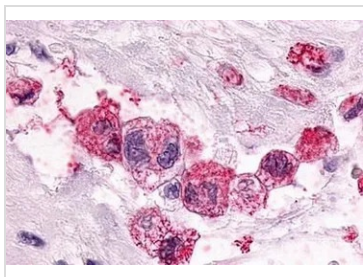
For laboratory research use only. Not for any clinical, therapeutic, or diagnostic use in humans or animals. Not for animal or human consumption.

Purchasers shall not, and agree not to enable third parties to, analyze, copy, reverse engineer or otherwise attempt to determine the structure or sequence of the product.

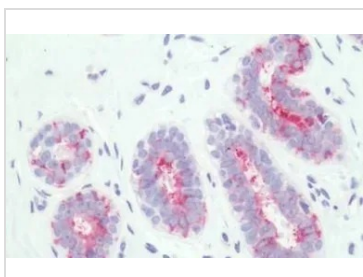


For full product information, images and publications, please visit our [website](#).

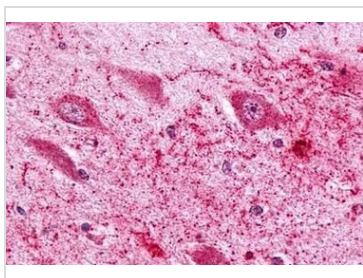
DATA IMAGES

**GTX13381 IHC-P Image**

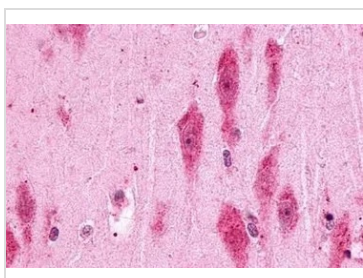
IHC-P analysis of human pancreas, carcinoma tissue using GTX13381 PTGER3 antibody.
Antigen retrieval : Heat-induced antigen retrieval

**GTX13381 IHC-P Image**

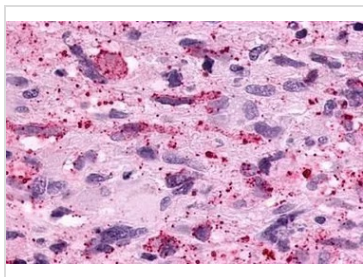
IHC-P analysis of human, breast tissue using GTX13381 PTGER3 antibody.

**GTX13381 IHC-P Image**

IHC-P analysis of human brain, hippocampus tissue using GTX13381 PTGER3 antibody.
Antigen retrieval : Heat-induced antigen retrieval

**GTX13381 IHC-P Image**

IHC-P analysis of human brain, hippocampus tissue using GTX13381 PTGER3 antibody.
Antigen retrieval : Heat-induced antigen retrieval

**GTX13381 IHC-P Image**

IHC-P analysis of human brain, glioblastoma tissue using GTX13381 PTGER3 antibody.
Antigen retrieval : Heat-induced antigen retrieval



For full product information, images and publications, please visit our [website](#).