

## IRS1 (phospho Ser307) antibody

**Cat. No. GTX133848**

<b>Host</b>	Rabbit
<b>Clonality</b>	Polyclonal
<b>Isotype</b>	IgG
<b>Applications</b>	WB, IHC-P
<b>Reactivity</b>	Human, Mouse, Rat

References ( 1 )

Package

100 µl, 25 µl

## Applications

**Application Note**

\*Optimal dilutions/concentrations should be determined by the researcher.

Suggested dilution	Recommended dilution
WB	1:500-1:3000
IHC-P	1:100-1:1000

Not tested in other applications.

**Calculated MW** 132 kDa. ( [Note](#) )

## Properties

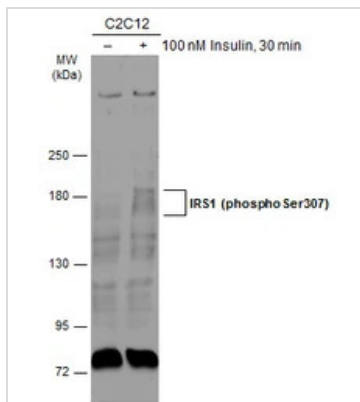
<b>Form</b>	Liquid
<b>Buffer</b>	PBS, 1% BSA, 20% Glycerol
<b>Preservative</b>	0.025% ProClin 300
<b>Storage</b>	Store as concentrated solution. Centrifuge briefly prior to opening vial. For short-term storage (1-2 weeks), store at 4°C. For long-term storage, aliquot and store at -20°C or below. Avoid multiple freeze-thaw cycles.
<b>Concentration</b>	1.51 mg/ml (Please refer to the vial label for the specific concentration.)
<b>Immunogen</b>	Carrier-protein conjugated synthetic peptide surrounding phospho Ser307 of human IRS1. The exact sequence is proprietary.
<b>Purification</b>	Purified by antigen-affinity chromatography.
<b>Conjugation</b>	Unconjugated

**Note**

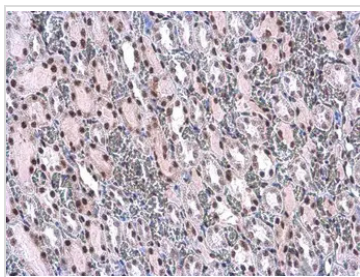
For laboratory research use only. Not for any clinical, therapeutic, or diagnostic use in humans or animals. Not for animal or human consumption.

Purchasers shall not, and agree not to enable third parties to, analyze, copy, reverse engineer or otherwise attempt to determine the structure or sequence of the product.

For full product information, images and publications, please visit our [website](#).

**DATA IMAGES**

**GTX133848 WB Image**

Untreated (-) and treated (+) C2C12 whole cell extracts (30 µg) were separated by 5% SDS-PAGE, and the membrane was blotted with IRS1 (phospho Ser307) antibody (GTX133848) diluted at 1:500. The HRP-conjugated anti-rabbit IgG antibody (GTX213110-01) was used to detect the primary antibody.

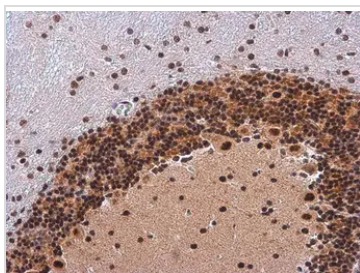

**GTX133848 IHC-P Image**

IRS1 (phospho Ser307) antibody detects IRS1 (phospho Ser307) protein at nucleus by immunohistochemical analysis.

Sample: Paraffin-embedded rat kidney.

IRS1 (phospho Ser307) stained by IRS1 (phospho Ser307) antibody (GTX133848) diluted at 1:500.

Antigen Retrieval: Citrate buffer, pH 6.0, 15 min


**GTX133848 IHC-P Image**

IRS1 (phospho Ser307) antibody detects IRS1 (phospho Ser307) protein at nucleus by immunohistochemical analysis.

Sample: Paraffin-embedded mouse brain.

IRS1 (phospho Ser307) stained by IRS1 (phospho Ser307) antibody (GTX133848) diluted at 1:500.

Antigen Retrieval: Citrate buffer, pH 6.0, 15 min



For full product information, images and publications, please visit our [website](https://www.genetex.com).