

## CDK2 (phospho Thr160) antibody

**Cat. No. GTX133862**

<b>Host</b>	Rabbit
<b>Clonality</b>	Polyclonal
<b>Isotype</b>	IgG
<b>Applications</b>	WB, IHC-P
<b>Reactivity</b>	Human

References ( 1 )

Package

100 µl, 25 µl

## Applications

**Application Note**

\*Optimal dilutions/concentrations should be determined by the researcher.

Suggested dilution	Recommended dilution
WB	1:500-1:3000
IHC-P	1:100-1:1000

Not tested in other applications.

**Calculated MW** 34 kDa. ( [Note](#) )

## Properties

<b>Form</b>	Liquid
<b>Buffer</b>	PBS, 1% BSA, 20% Glycerol
<b>Preservative</b>	0.025% ProClin 300
<b>Storage</b>	Store as concentrated solution. Centrifuge briefly prior to opening vial. For short-term storage (1-2 weeks), store at 4°C. For long-term storage, aliquot and store at -20°C or below. Avoid multiple freeze-thaw cycles.
<b>Concentration</b>	3.35 mg/ml (Please refer to the vial label for the specific concentration.)
<b>Immunogen</b>	Carrier-protein conjugated synthetic peptide surrounding phospho Thr160 of human CDK2. The exact sequence is proprietary.
<b>Purification</b>	Purified by antigen-affinity chromatography.
<b>Conjugation</b>	Unconjugated

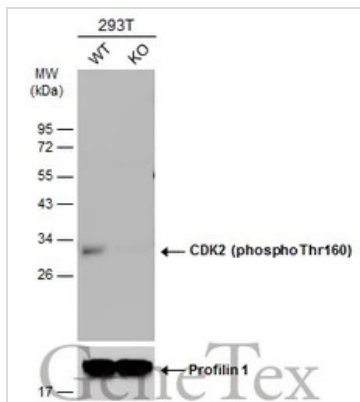
**Note**

For laboratory research use only. Not for any clinical, therapeutic, or diagnostic use in humans or animals. Not for animal or human consumption.

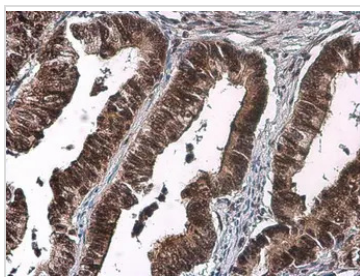
Purchasers shall not, and agree not to enable third parties to, analyze, copy, reverse engineer or otherwise attempt to determine the structure or sequence of the product.

For full product information, images and publications, please visit our [website](#).

## DATA IMAGES

**GTX133862 WB Image**

Wild-type (WT) and CDK2 (phospho Thr160) knockout (KO) 293T cell extracts (30  $\mu$ g) were separated by 12% SDS-PAGE, and the membrane was blotted with CDK2 (phospho Thr160) antibody (GTX133862) diluted at 1:500. The HRP-conjugated anti-rabbit IgG antibody (GTX213110-01) was used to detect the primary antibody, and the signal was developed with Trident ECL plus-Enhanced.

**GTX133862 IHC-P Image**

CDK2 (phospho Thr160) antibody detects CDK2 (phospho Thr160) protein at cytoplasm and nucleus by immunohistochemical analysis.

Sample: Paraffin-embedded human colon cancer.

CDK2 (phospho Thr160) stained by CDK2 (phospho Thr160) antibody (GTX133862) diluted at 1:500.

Antigen Retrieval: Citrate buffer, pH 6.0, 15 min

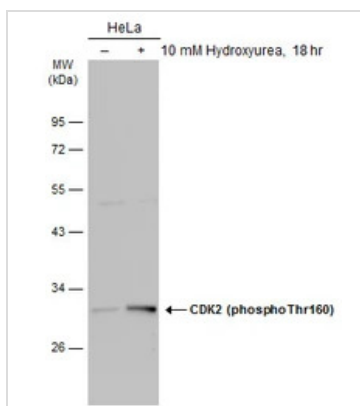
**GTX133862 IHC-P Image**

CDK2 (phospho Thr160) antibody detects CDK2 (phospho Thr160) protein at cytoplasm and nucleus by immunohistochemical analysis.

Sample: Paraffin-embedded human colon.

CDK2 (phospho Thr160) stained by CDK2 (phospho Thr160) antibody (GTX133862) diluted at 1:500.

Antigen Retrieval: Citrate buffer, pH 6.0, 15 min

**GTX133862 WB Image**

Untreated (-) and treated (+) HeLa whole cell extracts (30  $\mu$ g) were separated by 10% SDS-PAGE, and the membrane was blotted with CDK2 (phospho Thr160) antibody (GTX133862) diluted at 1:500. The HRP-conjugated anti-rabbit IgG antibody (GTX213110-01) was used to detect the primary antibody.



For full product information, images and publications, please visit our [website](https://www.genetex.com).