

NFkB p65 (phospho Ser536) antibody

Cat. No. GTX133899

Host	Rabbit
Clonality	Polyclonal
Isotype	IgG
Application	WB, ICC/IF
Reactivity	Human, Mouse, Rat

Reference (9)

★★★★☆ Review (1)

Package

100 µl, 25 µl

APPLICATION

Application Note

*Optimal dilutions/concentrations should be determined by the researcher.

Suggested dilution	Recommended dilution
WB	1:1000
ICC/IF	Assay dependent

Not tested in other applications.

Calculated MW 60 kDa. ([Note](#))

PROPERTIES

Form	Liquid
Buffer	PBS, 1% BSA, 20% Glycerol
Preservative	0.025% ProClin 300
Storage	Store as concentrated solution. Centrifuge briefly prior to opening vial. For short-term storage (1-2 weeks), store at 4°C. For long-term storage, we recommend adding 50% glycerol, then aliquot and store at -20°C or below. Avoid multiple freeze-thaw cycles.
Concentration	0.59 mg/ml (Please refer to the vial label for the specific concentration.)
Immunogen	Carrier-protein conjugated synthetic peptide surrounding phospho Ser536 of human NFkB p65. The exact sequence is proprietary.
Purification	Purified by antigen-affinity chromatography.
Conjugation	Unconjugated

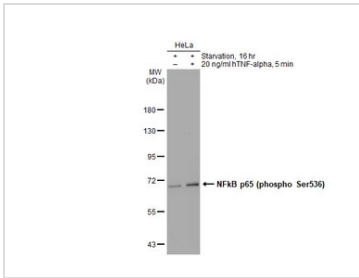
Note

For laboratory research use only. Not for any clinical, therapeutic, or diagnostic use in humans or animals. Not for animal or human consumption.

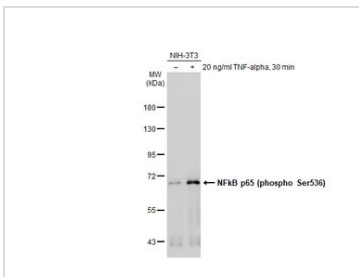
Purchasers shall not, and agree not to enable third parties to, analyze, copy, reverse engineer or otherwise attempt to determine the structure or sequence of the product.



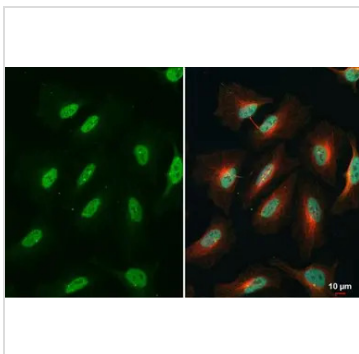
For full product information, images and publications, please visit our [website](#).

DATA IMAGES

GTX133899 WB Image

Untreated (-) and treated (+) HeLa whole cell extracts (30 µg) were separated by 7.5% SDS-PAGE, and the membrane was blotted with NFkB p65 (phospho Ser536) antibody (GTX133899) diluted at 1:500. The HRP-conjugated anti-rabbit IgG antibody (GTX213110-01) was used to detect the primary antibody.


GTX133899 WB Image

Untreated (-) and treated (+) NIH-3T3 whole cell extracts (30 µg) were separated by 7.5% SDS-PAGE, and the membrane was blotted with NFkB p65 (phospho Ser536) antibody (GTX133899) diluted at 1:1000. The HRP-conjugated anti-rabbit IgG antibody (GTX213110-01) was used to detect the primary antibody.


GTX133899 ICC/IF Image

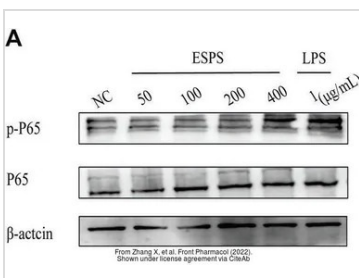
NFkB p65 (phospho Ser536) antibody detects NFkB p65 (phospho Ser536) protein at nucleus by immunofluorescent analysis.

Sample: HeLa cells were fixed in 4% paraformaldehyde at RT for 15 min.

Green: NFkB p65 (phospho Ser536) stained by NFkB p65 (phospho Ser536) antibody (GTX133899) diluted at 1:500.

Red: alpha Tubulin, a cytoskeleton marker, stained by alpha Tubulin antibody [GT114] (GTX628802) diluted at 1:1000.

Blue: Fluoroshield with DAPI (GTX30920).


GTX133899 WB Image

The data was published in the 2022 in Front Pharmacol. [PMID: 35308231](https://pubmed.ncbi.nlm.nih.gov/35308231/)



For full product information, images and publications, please visit our [website](https://www.genetex.com).