

CGRP antibody

Cat. No. GTX134005

Host	Rabbit
Clonality	Polyclonal
Isotype	IgG
Applications	ICC/IF, IHC-P, IHC-Fr
Reactivity	Mouse, Rat

References (1)

★★★★★ Review (1)

Package

100 µl, 25 µl

Applications

Application Note

*Optimal dilutions/concentrations should be determined by the researcher.

Suggested dilution	Recommended dilution
ICC/IF	1:100-1:1000
IHC-P	1:100-1:1000
IHC-Fr	1:100-1:1000

Not tested in other applications.

Properties

Form	Liquid
Buffer	PBS, 20% Glycerol
Preservative	0.025% ProClin 300
Storage	Store as concentrated solution. Centrifuge briefly prior to opening vial. For short-term storage (1-2 weeks), store at 4°C. For long-term storage, aliquot and store at -20°C or below. Avoid multiple freeze-thaw cycles.
Concentration	0.9 mg/ml (Please refer to the vial label for the specific concentration.)
Immunogen	Carrier-protein conjugated synthetic peptide encompassing a sequence within the center region of mouse CGRP. The exact sequence is proprietary.
Purification	Purified by antigen-affinity chromatography.
Conjugation	Unconjugated

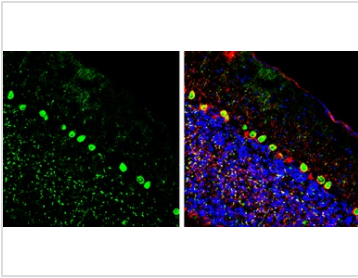
Note

For laboratory research use only. Not for any clinical, therapeutic, or diagnostic use in humans or animals. Not for animal or human consumption.

Purchasers shall not, and agree not to enable third parties to, analyze, copy, reverse engineer or otherwise attempt to determine the structure or sequence of the product.



For full product information, images and publications, please visit our [website](#).

DATA IMAGES

GTX134005 IHC-Fr Image

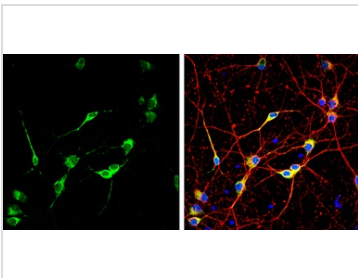
Calcitonin antibody detects Calcitonin protein by immunohistochemical analysis.

Sample: Frozen-sectioned mouse cerebellum.

Green: Calcitonin stained by Calcitonin antibody (GTX134005) diluted at 1:250.

Red: NF-H, stained by NF-H antibody [GT114] (GTX634289) diluted at 1:500.

Blue: Fluoroshield with DAPI (GTX30920).


GTX134005 ICC/IF Image

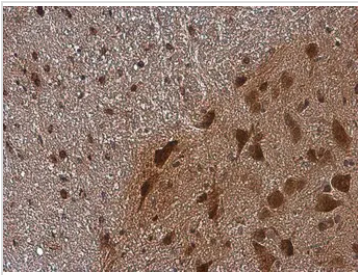
Calcitonin antibody detects Calcitonin protein by immunofluorescent analysis.

Sample: DIV10 rat E18 primary cortical neuron cells were fixed in 4% paraformaldehyde at RT for 15 min.

Green: Calcitonin stained by Calcitonin antibody (GTX134005) diluted at 1:500.

Red: alpha Tubulin, stained by alpha Tubulin antibody [GT114] (GTX628802) diluted at 1:500.

Blue: Fluoroshield with DAPI (GTX30920).

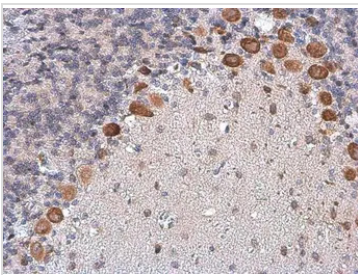

GTX134005 IHC-P Image

Calcitonin antibody detects Calcitonin protein at cytoplasm by immunohistochemical analysis.

Sample: Paraffin-embedded mouse spinal cord .

Calcitonin stained by Calcitonin antibody (GTX134005) diluted at 1:500.

Antigen Retrieval: Citrate buffer, pH 6.0, 15 min

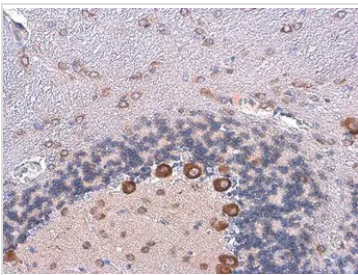

GTX134005 IHC-P Image

Calcitonin antibody detects Calcitonin protein at cytoplasm by immunohistochemical analysis.

Sample: Paraffin-embedded rat brain.

Calcitonin stained by Calcitonin antibody (GTX134005) diluted at 1:500.

Antigen Retrieval: Citrate buffer, pH 6.0, 15 min


GTX134005 IHC-P Image

Calcitonin antibody detects Calcitonin protein at cytoplasm by immunohistochemical analysis.

Sample: Paraffin-embedded mouse brain.

Calcitonin stained by Calcitonin antibody (GTX134005) diluted at 1:500.

Antigen Retrieval: Citrate buffer, pH 6.0, 15 min



For full product information, images and publications, please visit our [website](https://www.genetex.com).