

EN1 antibody

Cat. No. GTX134013

Host	Rabbit
Clonality	Polyclonal
Isotype	IgG
Application	IHC-P, IHC-Fr
Reactivity	Mouse

Package
100 µl, 25 µl

APPLICATION

Application Note

*Optimal dilutions/concentrations should be determined by the researcher.

Suggested dilution	Recommended dilution
IHC-P	1:100-1:1000
IHC-Fr	1:100-1:1000

Not tested in other applications.

Calculated MW 41 kDa. ([Note](#))

PROPERTIES

Form	Liquid
Buffer	PBS, 20% Glycerol
Preservative	0.025% ProClin 300
Storage	Store as concentrated solution. Centrifuge briefly prior to opening vial. For short-term storage (1-2 weeks), store at 4°C. For long-term storage, aliquot and store at -20°C or below. Avoid multiple freeze-thaw cycles.
Concentration	0.56 mg/ml (Please refer to the vial label for the specific concentration.)
Immunogen	Recombinant protein encompassing a sequence within the center region of mouse EN1. The exact sequence is proprietary.
Purification	Purified by antigen-affinity chromatography.
Conjugation	Unconjugated

Note

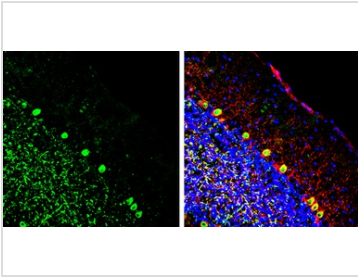
For laboratory research use only. Not for any clinical, therapeutic, or diagnostic use in humans or animals. Not for animal or human consumption.

Purchasers shall not, and agree not to enable third parties to, analyze, copy, reverse engineer or otherwise attempt to determine the structure or sequence of the product.



For full product information, images and publications, please visit our [website](#).

DATA IMAGES



GTX134013 IHC-Fr Image

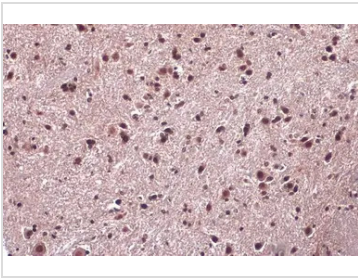
EN1 antibody detects EN1 protein by immunohistochemical analysis.

Sample: Frozen-sectioned mouse cerebellum.

Green: EN1 stained by EN1 antibody (GTX134013) diluted at 1:250.

Red: NF-H, stained by NF-H antibody [GT114] (GTX634289) diluted at 1:500.

Blue: Fluoroshield with DAPI (GTX30920).



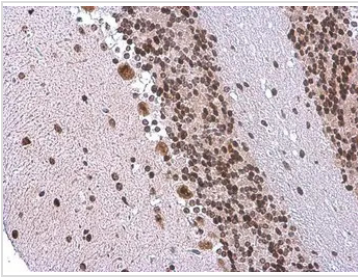
GTX134013 IHC-P Image

EN1 antibody detects EN1 protein at cytoplasm and nucleus by immunohistochemical analysis.

Sample: Paraffin-embedded mouse spinal cord.

EN1 stained by EN1 antibody (GTX134013) diluted at 1:500.

Antigen Retrieval: Citrate buffer, pH 6.0, 15 min



GTX134013 IHC-P Image

EN1 antibody detects EN1 protein at nucleus by immunohistochemical analysis.

Sample: Paraffin-embedded mouse brain.

EN1 stained by EN1 antibody (GTX134013) diluted at 1:500.

Antigen Retrieval: Citrate buffer, pH 6.0, 15 min



For full product information, images and publications, please visit our [website](#).