

## Ebola virus VP35 antibody

Cat. No. GTX134032

|              |             |
|--------------|-------------|
| Host         | Rabbit      |
| Clonality    | Polyclonal  |
| Isotype      | IgG         |
| Applications | WB, ICC/IF  |
| Reactivity   | Ebola virus |

References ( 2 )

Package

100 µl, 25 µl

## Applications

## Application Note

\*Optimal dilutions/concentrations should be determined by the researcher.

| Suggested dilution | Recommended dilution |
|--------------------|----------------------|
| WB                 | 1:1000-1:10000       |
| ICC/IF             | 1:100-1:1000         |

Not tested in other applications.

## Properties

|               |  |
|---------------|--|
| Form          | Liquid   |
| Buffer        | PBS, 20% Glycerol  |
| Preservative  | 0.025% ProClin 300   |
| Storage       | Store as concentrated solution. Centrifuge briefly prior to opening vial. For short-term storage (1-2 weeks), store at 4°C. For long-term storage, aliquot and store at -20°C or below. Avoid multiple freeze-thaw cycles. |
| Concentration | 0.55 mg/ml (Please refer to the vial label for the specific concentration.)  |
| Immunogen     | Recombinant protein encompassing a sequence within the center region of Ebola virus VP35 (Zaire ebolavirus (strain Mayinga-76)). The exact sequence is proprietary.  |
| Purification  | Purified by antigen-affinity chromatography.   |
| Conjugation   | Unconjugated   |

## Note

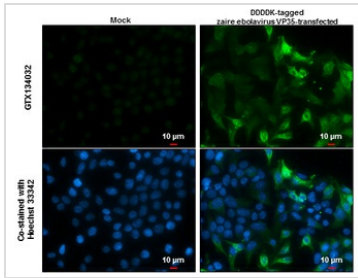
For laboratory research use only. Not for any clinical, therapeutic, or diagnostic use in humans or animals. Not for animal or human consumption.

Purchasers shall not, and agree not to enable third parties to, analyze, copy, reverse engineer or otherwise attempt to determine the structure or sequence of the product.



For full product information, images and publications, please visit our [website](#).

## DATA IMAGES



### GTx134032 ICC/IF Image

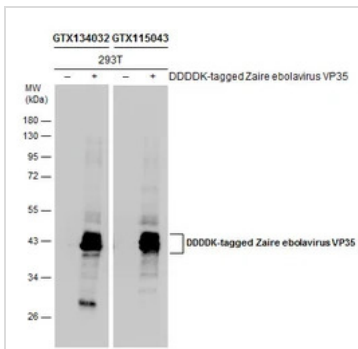
Ebola virus VP35 antibody detects Ebola virus VP35 protein at cytoplasm by immunofluorescent analysis.

Sample: Mock and transfected 293T cells were fixed in 4% paraformaldehyde at RT for 15 min.

Green: Ebola virus VP35 protein stained by Ebola virus VP35 antibody (GTx134032) diluted at 1:1000.

Blue: Hoechst 33342 staining.

Scale bar = 10 μm.



### GTx134032 WB Image

Non-transfected (-) and transfected (+) 293T whole cell extracts (5 μg) were separated by 10% SDS-PAGE,

and the membranes were blotted with Ebola virus VP35 antibody (GTx134032) diluted at 1:5000 and

DDDDK tag antibody (GTx115043) diluted at 1:2000. The HRP-conjugated anti-rabbit IgG antibody

(GTx213110-01) was used to detect the primary antibody.



For full product information, images and publications, please visit our [website](https://www.genetex.com).