

## EAAT2 antibody

Cat. No. GTX134062

|              |                   |
|--------------|-------------------|
| Host         | Rabbit            |
| Clonality    | Polyclonal        |
| Isotype      | IgG               |
| Applications | WB, IHC-P, IHC-Fr |
| Reactivity   | Mouse, Rat        |

 Review ( 1 )Package  
100 µl, 25 µl

## Applications

## Application Note

\*Optimal dilutions/concentrations should be determined by the researcher.

| Suggested dilution | Recommended dilution |
|--------------------|----------------------|
| WB                 | 1:500-1:3000         |
| IHC-P              | 1:100-1:1000         |
| IHC-Fr             | Assay dependent      |

Not tested in other applications.

Calculated MW 62 kDa. ( [Note](#) )

## Properties

|               |  |
|---------------|--|
| Form          | Liquid   |
| Buffer        | PBS, 20% Glycerol  |
| Preservative  | 0.025% ProClin 300   |
| Storage       | Store as concentrated solution. Centrifuge briefly prior to opening vial. For short-term storage (1-2 weeks), store at 4°C. For long-term storage, aliquot and store at -20°C or below. Avoid multiple freeze-thaw cycles. |
| Concentration | 0.77 mg/ml (Please refer to the vial label for the specific concentration.)  |
| Immunogen     | Recombinant protein encompassing a sequence within the N-terminus region of mouse EAAT2. The exact sequence is proprietary.  |
| Purification  | Purified by antigen-affinity chromatography.   |
| Conjugation   | Unconjugated   |

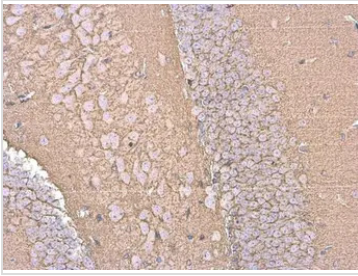
## Note

For laboratory research use only. Not for any clinical, therapeutic, or diagnostic use in humans or animals. Not for animal or human consumption.

Purchasers shall not, and agree not to enable third parties to, analyze, copy, reverse engineer or otherwise attempt to determine the structure or sequence of the product.

For full product information, images and publications, please visit our [website](#).

## DATA IMAGES



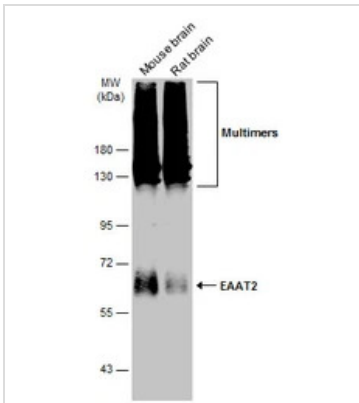
### GTX134062 IHC-P Image

EAAT2 antibody detects EAAT2 protein at cell membrane by immunohistochemical analysis.

Sample: Paraffin-embedded mouse hippocampus.

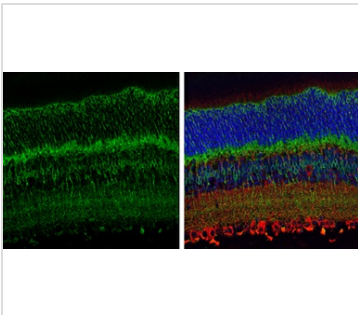
EAAT2 stained by EAAT2 antibody (GTX134062) diluted at 1:500.

Antigen Retrieval: Citrate buffer, pH 6.0, 15 min



### GTX134062 WB Image

Various tissue extracts (50 µg) were separated by 7.5% SDS-PAGE, and the membrane was blotted with EAAT2 antibody (GTX134062) diluted at 1:1000. The HRP-conjugated anti-rabbit IgG antibody (GTX213110-01) was used to detect the primary antibody.



### GTX134062 IHC-P Image

EAAT2 antibody detects EAAT2 protein at cell membrane by immunohistochemical analysis.

Sample: Paraffin-embedded mouse eye.

Green: EAAT2 stained by EAAT2 antibody (GTX134062) diluted at 1:250.

Red: beta Tubulin 3/ Tuj1, a cytoplasm marker, stained by beta Tubulin 3/ Tuj1 antibody [GT1338] (GTX631831) diluted at 1:500.

Blue: Fluoroshield with DAPI (GTX30920).

Antigen Retrieval: Citrate buffer, pH 6.0, 15 min



For full product information, images and publications, please visit our [website](https://www.genetex.com).