

NeuroD1 antibody

Cat. No. GTX134069

Host	Rabbit
Clonality	Polyclonal
Isotype	IgG
Application	WB, ICC/IF, IHC-P
Reactivity	Human, Mouse, Rat

Reference (3)

Package

100 µl, 25 µl

APPLICATION

Application Note

*Optimal dilutions/concentrations should be determined by the researcher.

Suggested dilution	Recommended dilution
WB	1:500-1:3000
ICC/IF	1:100-1:1000
IHC-P	1:100-1:1000

Not tested in other applications.

Calculated MW 40 kDa. ([Note](#))

PROPERTIES

Form	Liquid
Buffer	PBS, 20% Glycerol
Preservative	0.025% ProClin 300
Storage	Store as concentrated solution. Centrifuge briefly prior to opening vial. For short-term storage (1-2 weeks), store at 4°C. For long-term storage, aliquot and store at -20°C or below. Avoid multiple freeze-thaw cycles.
Concentration	1.65 mg/ml (Please refer to the vial label for the specific concentration.)
Immunogen	Recombinant protein encompassing a sequence within the N-terminus region of mouse NeuroD1. The exact sequence is proprietary.
Purification	Purified by antigen-affinity chromatography.
Conjugation	Unconjugated

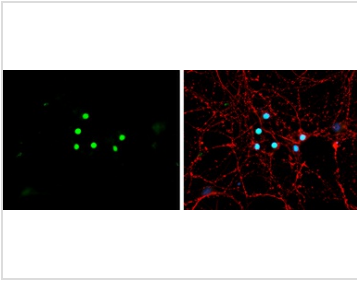
Note

For laboratory research use only. Not for any clinical, therapeutic, or diagnostic use in humans or animals. Not for animal or human consumption.

Purchasers shall not, and agree not to enable third parties to, analyze, copy, reverse engineer or otherwise attempt to determine the structure or sequence of the product.



For full product information, images and publications, please visit our [website](#).

DATA IMAGES

GTx134069 ICC/IF Image

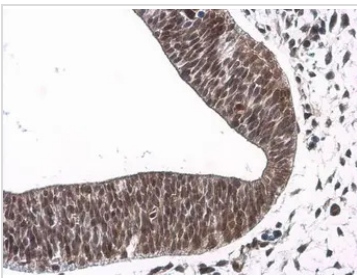
NeuroD1 antibody detects NeuroD1 protein by immunofluorescent analysis.

Sample: DIV9 rat E18 primary hippocampal neuron cells were fixed in 4% paraformaldehyde at RT for 15 min.

Green: NeuroD1 stained by NeuroD1 antibody (GTx134069) diluted at 1:500.

Red: alpha Tubulin, stained by alpha Tubulin antibody [GT114] (GTx628802) diluted at 1:500.

Blue: Fluoroshield with DAPI (GTx30920).

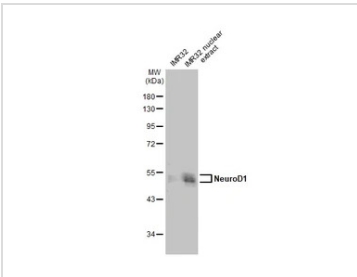

GTx134069 IHC-P Image

NeuroD1 antibody detects NeuroD1 protein at nucleus by immunohistochemical analysis.

Sample: Paraffin-embedded E10.5 mouse embryo.

NeuroD1 stained by NeuroD1 antibody (GTx134069) diluted at 1:500.

Antigen Retrieval: Citrate buffer, pH 6.0, 15 min


GTx134069 WB Image

IMR32 whole cell and nuclear extracts (30 µg) were separated by 10% SDS-PAGE, and the membrane was blotted with NeuroD1 antibody (GTx134069) diluted at 1:1000. The HRP-conjugated anti-rabbit IgG antibody (GTx213110-01) was used to detect the primary antibody.



For full product information, images and publications, please visit our [website](https://www.genetex.com).