

## NF-L antibody

Cat. No. GTX134085

Host	Rabbit
Clonality	Polyclonal
Isotype	IgG
Application	WB, ELISA, Sandwich ELISA
Reactivity	Human, Mouse, Rat

Package  
100 µl, 25 µl

## APPLICATION

## Application Note

\*Optimal dilutions/concentrations should be determined by the researcher.

Suggested dilution	Recommended dilution
WB	1:500-1:3000
ELISA	Assay dependent
Sandwich ELISA	Assay dependent

**Note : Capture : GTX134085, Detection : GTX24572 / GTX60544**

Not tested in other applications.

**Calculated MW** 62 kDa. ( [Note](#) )

## PROPERTIES

Form	Liquid
Buffer	PBS, 1% BSA, 20% Glycerol
Preservative	0.025% ProClin 300
Storage	Store as concentrated solution. Centrifuge briefly prior to opening vial. For short-term storage (1-2 weeks), store at 4°C. For long-term storage, aliquot and store at -20°C or below. Avoid multiple freeze-thaw cycles.
Concentration	0.05 mg/ml (Please refer to the vial label for the specific concentration.)
Immunogen	Recombinant protein encompassing a sequence within the C-terminus region of mouse NF-L. The exact sequence is proprietary.
Purification	Purified by antigen-affinity chromatography.
Conjugation	Unconjugated

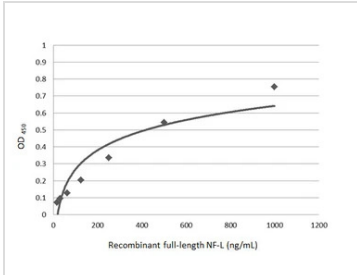


For full product information, images and publications, please visit our [website](#).

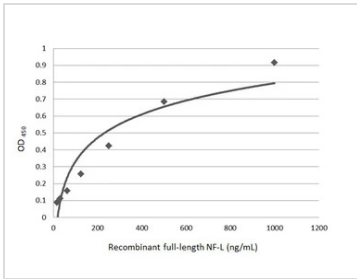
For laboratory research use only. Not for any clinical, therapeutic, or diagnostic use in humans or animals. Not for animal or human consumption.

**Note**

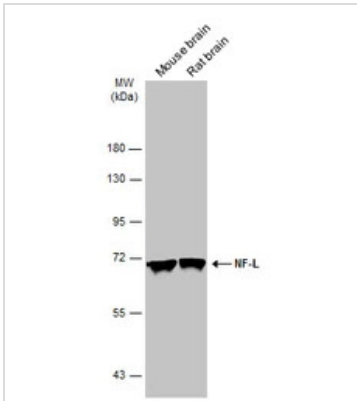
Purchasers shall not, and agree not to enable third parties to, analyze, copy, reverse engineer or otherwise attempt to determine the structure or sequence of the product.

**DATA IMAGES**

**GTX134085 ELISA Image**

Sandwich ELISA detection of recombinant full-length NF-L protein using GTX134085 as capture antibody at concentration of 5 µg/mL and GTX60544 as detection antibody was diluted at 1:10000. Mouse IgG antibody (HRP) (GTX213111-01) was diluted at 1:10000 and used to detect the primary antibody.


**GTX134085 ELISA Image**

Sandwich ELISA detection of recombinant full-length NF-L protein using GTX134085 as capture antibody at concentration of 5 µg/mL and GTX24572 as detection antibody was diluted at 1:1000. Mouse IgG antibody (HRP) (GTX213111-01) was diluted at 1:10000 and used to detect the primary antibody.


**GTX134085 WB Image**

Various tissue extracts (30 µg) were separated by 7.5% SDS-PAGE, and the membrane was blotted with NF-L antibody (GTX134085) diluted at 1:1000. The HRP-conjugated anti-rabbit IgG antibody (GTX213110-01) was used to detect the primary antibody.



For full product information, images and publications, please visit our [website](https://www.genetex.com).