

TMEM119 antibody

Cat. No. GTX134087

Host	Rabbit
Clonality	Polyclonal
Isotype	IgG
Applications	IHC-P, IHC-Fr
Reactivity	Mouse, Rat

References (3)

★★★★★ Review (1)

Package

100 µl, 25 µl

Applications

Application Note

*Optimal dilutions/concentrations should be determined by the researcher.

Suggested dilution	Recommended dilution
IHC-P	1:100-1:1000
IHC-Fr	1:100-1:1000

Not tested in other applications.

Properties

Form	Liquid
Buffer	PBS, 20% Glycerol
Preservative	0.025% ProClin 300
Storage	Store as concentrated solution. Centrifuge briefly prior to opening vial. For short-term storage (1-2 weeks), store at 4°C. For long-term storage, aliquot and store at -20°C or below. Avoid multiple freeze-thaw cycles.
Concentration	1.36 mg/ml (Please refer to the vial label for the specific concentration.)
Immunogen	Recombinant protein encompassing a sequence within the Intracellular domain of mouse TMEM119. The exact sequence is proprietary.
Purification	Purified by antigen-affinity chromatography.
Conjugation	Unconjugated

Note

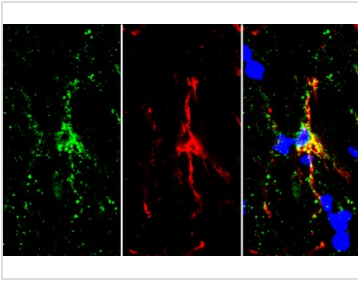
For laboratory research use only. Not for any clinical, therapeutic, or diagnostic use in humans or animals. Not for animal or human consumption.

Purchasers shall not, and agree not to enable third parties to, analyze, copy, reverse engineer or otherwise attempt to determine the structure or sequence of the product.



For full product information, images and publications, please visit our [website](#).

DATA IMAGES



GTX134087 IHC-Fr Image

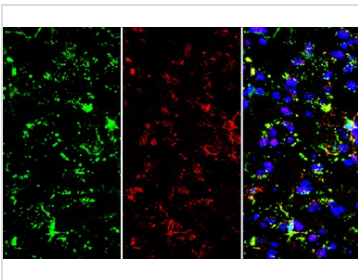
TMEM119 antibody detects TMEM119 protein by immunohistochemical analysis.

Sample: Frozen-sectioned mouse brain.

Red: TMEM119 stained by TMEM119 antibody (GTX134087) diluted at 1:250.

Green: Iba1 (isoform 1 and 3), stained by Iba1 (isoform 1 and 3) antibody, C-term (GTX89792) diluted at 1:250.

Blue: Hoechst 33342 staining.



GTX134087 IHC-Fr Image

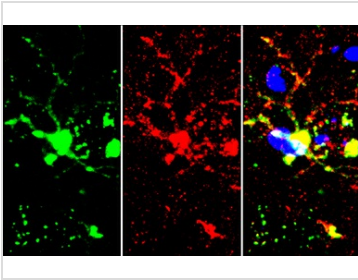
TMEM119 antibody detects TMEM119 protein by immunohistochemical analysis.

Sample: Frozen-sectioned mouse brain.

Red: TMEM119 stained by TMEM119 antibody (GTX134087) diluted at 1:250.

Green: Iba1 (isoform 1 and 3), stained by Iba1 (isoform 1 and 3) antibody, C-term (GTX89792) diluted at 1:250.

Blue: Hoechst 33342 staining.



GTX134087 IHC-Fr Image

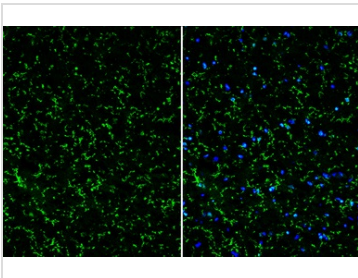
TMEM119 antibody detects TMEM119 protein by immunohistochemical analysis.

Sample: Frozen-sectioned mouse brain.

Red: TMEM119 stained by TMEM119 antibody (GTX134087) diluted at 1:250.

Green: Iba1 (isoform 1 and 3), stained by Iba1 (isoform 1 and 3) antibody, C-term (GTX89792) diluted at 1:250.

Blue: Hoechst 33342 staining.



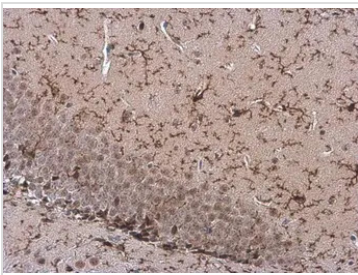
GTX134087 IHC-Fr Image

TMEM119 antibody detects TMEM119 protein by immunohistochemical analysis.

Sample: Frozen-sectioned mouse hippocampus.

Green: TMEM119 stained by TMEM119 antibody (GTX134087) diluted at 1:250.

Blue: Fluoroshield with DAPI (GTX30920).



GTX134087 IHC-P Image

TMEM119 antibody detects TMEM119 protein at cytoplasm by immunohistochemical analysis.

Sample: Paraffin-embedded mouse hippocampus.

TMEM119 stained by TMEM119 antibody (GTX134087) diluted at 1:250.

Antigen Retrieval: Citrate buffer, pH 6.0, 15 min



For full product information, images and publications, please visit our [website](#).