

## TBR2 / Eomes antibody

**Cat. No. GTX134088**

<b>Host</b>	Rabbit
<b>Clonality</b>	Polyclonal
<b>Isotype</b>	IgG
<b>Applications</b>	WB, IHC-P
<b>Reactivity</b>	Mouse, Rat

**Package**  
100 µl, 25 µl

### Applications

#### Application Note

\*Optimal dilutions/concentrations should be determined by the researcher.

Suggested dilution	Recommended dilution
WB	1:500-1:3000
IHC-P	1:100-1:1000

Not tested in other applications.

**Calculated MW** 75 kDa. ( [Note](#) )

### Properties

<b>Form</b>	Liquid
<b>Buffer</b>	PBS, 20% Glycerol
<b>Preservative</b>	0.025% ProClin 300
<b>Storage</b>	Store as concentrated solution. Centrifuge briefly prior to opening vial. For short-term storage (1-2 weeks), store at 4°C. For long-term storage, aliquot and store at -20°C or below. Avoid multiple freeze-thaw cycles.
<b>Concentration</b>	1.12 mg/ml (Please refer to the vial label for the specific concentration.)
<b>Immunogen</b>	Recombinant protein encompassing a sequence within the center region of mouse TBR2 / Eomes. The exact sequence is proprietary.
<b>Purification</b>	Purified by antigen-affinity chromatography.
<b>Conjugation</b>	Unconjugated

#### Note

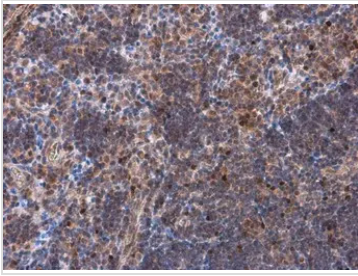
For laboratory research use only. Not for any clinical, therapeutic, or diagnostic use in humans or animals. Not for animal or human consumption.

Purchasers shall not, and agree not to enable third parties to, analyze, copy, reverse engineer or otherwise attempt to determine the structure or sequence of the product.



For full product information, images and publications, please visit our [website](#).

## DATA IMAGES



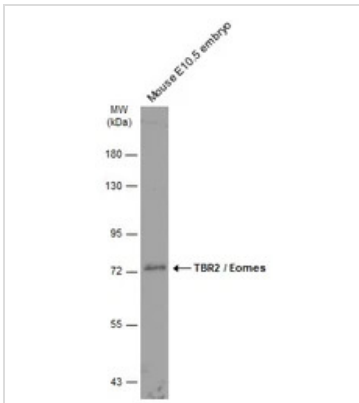
### GTx134088 IHC-P Image

TBR2 / Eomes antibody detects TBR2 protein at nucleus by immunohistochemical analysis.

Sample: Paraffin-embedded rat lymph node.

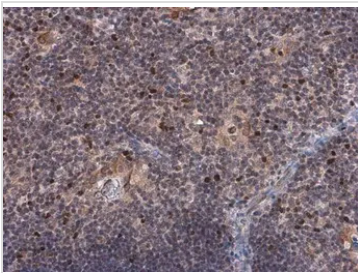
TBR2 stained by TBR2 / Eomes antibody (GTx134088) diluted at 1:500.

Antigen Retrieval: Citrate buffer, pH 6.0, 15 min



### GTx134088 WB Image

Mouse tissue extract (50 µg) was separated by 7.5% SDS-PAGE, and the membrane was blotted with TBR2 / Eomes antibody (GTx134088) diluted at 1:1000. The HRP-conjugated anti-rabbit IgG antibody (GTx213110-01) was used to detect the primary antibody.



### GTx134088 IHC-P Image

TBR2 / Eomes antibody detects TBR2 protein at nucleus by immunohistochemical analysis.

Sample: Paraffin-embedded mouse thymus gland.

TBR2 stained by TBR2 / Eomes antibody (GTx134088) diluted at 1:500.

Antigen Retrieval: Citrate buffer, pH 6.0, 15 min



For full product information, images and publications, please visit our [website](https://www.genetex.com).