

## Desmuslin antibody

Cat. No. GTX134124

|              |                   |
|--------------|-------------------|
| Host         | Rabbit            |
| Clonality    | Polyclonal        |
| Isotype      | IgG               |
| Applications | WB, ICC/IF, IHC-P |
| Reactivity   | Mouse, Rat        |

Package  
100 µl, 25 µl

## Applications

## Application Note

\*Optimal dilutions/concentrations should be determined by the researcher.

| Suggested dilution | Recommended dilution |
|--------------------|----------------------|
| WB                 | 1:500-1:3000         |
| ICC/IF             | 1:100-1:1000         |
| IHC-P              | 1:100-1:1000         |

Not tested in other applications.

Calculated MW 173 kDa. ([Note](#))

## Properties

|               |  |
|---------------|--|
| Form          | Liquid   |
| Buffer        | PBS, 1% BSA, 20% Glycerol  |
| Preservative  | 0.025% ProClin 300   |
| Storage       | Store as concentrated solution. Centrifuge briefly prior to opening vial. For short-term storage (1-2 weeks), store at 4°C. For long-term storage, aliquot and store at -20°C or below. Avoid multiple freeze-thaw cycles. |
| Concentration | 0.13 mg/ml (Please refer to the vial label for the specific concentration.)  |
| Immunogen     | Recombinant protein encompassing a sequence within the center region of mouse Desmuslin. The exact sequence is proprietary.  |
| Purification  | Purified by antigen-affinity chromatography.   |
| Conjugation   | Unconjugated   |

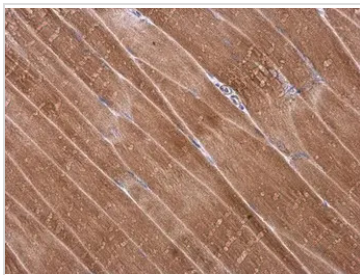
## Note

For laboratory research use only. Not for any clinical, therapeutic, or diagnostic use in humans or animals. Not for animal or human consumption.

Purchasers shall not, and agree not to enable third parties to, analyze, copy, reverse engineer or otherwise attempt to determine the structure or sequence of the product.



For full product information, images and publications, please visit our [website](#).

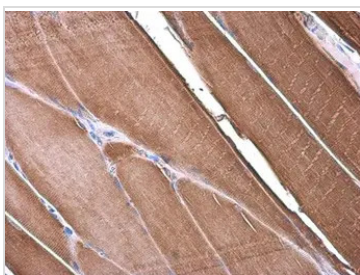
**DATA IMAGES**

**GTx134124 IHC-P Image**

Desmuslin antibody detects Desmuslin protein at cytoplasm by immunohistochemical analysis.

Sample: Paraffin-embedded mouse muscle.

Desmuslin stained by Desmuslin antibody (GTx134124) diluted at 1:500.

Antigen Retrieval: Citrate buffer, pH 6.0, 15 min

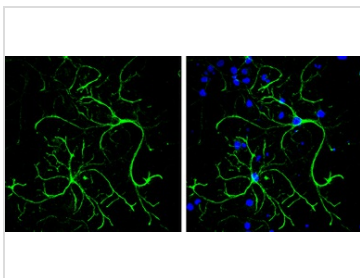

**GTx134124 IHC-P Image**

Desmuslin antibody detects Desmuslin protein at cytoplasm by immunohistochemical analysis.

Sample: Paraffin-embedded rat muscle.

Desmuslin stained by Desmuslin antibody (GTx134124) diluted at 1:500.

Antigen Retrieval: Citrate buffer, pH 6.0, 15 min

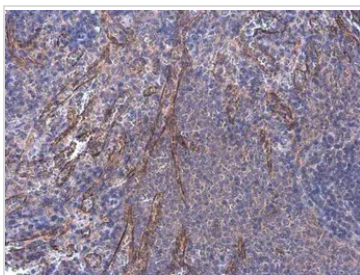

**GTx134124 ICC/IF Image**

Desmuslin antibody detects Desmuslin protein by immunofluorescent analysis.

Sample: DIV10 rat E18 primary cortical neuron and glia cells were fixed in 4% paraformaldehyde at RT for 15 min.

Green: Desmuslin stained by Desmuslin antibody (GTx134124) diluted at 1:500.

Blue: Fluoroshield with DAPI (GTx30920).

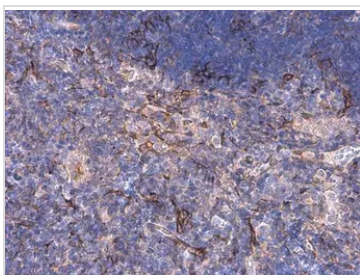

**GTx134124 IHC-P Image**

Desmuslin antibody detects Desmuslin protein by immunohistochemical analysis.

Sample: Paraffin-embedded rat spleen.

Desmuslin stained by Desmuslin antibody (GTx134124) diluted at 1:500.

Antigen Retrieval: Citrate buffer, pH 6.0, 15 min


**GTx134124 IHC-P Image**

Desmuslin antibody detects Desmuslin protein by immunohistochemical analysis.

Sample: Paraffin-embedded mouse thymus gland.

Desmuslin stained by Desmuslin antibody (GTx134124) diluted at 1:500.

Antigen Retrieval: Citrate buffer, pH 6.0, 15 min



For full product information, images and publications, please visit our [website](https://www.genetex.com).