

Osteocalcin antibody [OC4-30]

Cat. No. GTX13418

Host	Mouse
Clonality	Monoclonal
Isotype	IgG2a
Applications	WB, ICC/IF, IHC-P, IHC-Fr, ELISA, IHC, Sandwich ELISA
Reactivity	Human, Rat, Rabbit, Goat, Sheep, Dog, Chicken, Pig

References (19)

Package

50 µg

Applications

Application Note

*Optimal dilutions/concentrations should be determined by the researcher.

Suggested dilution	Recommended dilution
WB	1-10 µg/ml
ICC/IF	Assay dependent
IHC-P	1-10µg/ml
IHC-Fr	1-10µg/ml
ELISA	Assay dependent
IHC	Assay dependent
Sandwich ELISA	1-10µg/ml (with immobilized antigen)

Note : Antigen retrieval with 0.4ug/ml Proteinase K.**Antigen retrieval with 0.4ug/ml Proteinase K.****Capture : GTX13418 ; Detection : GTX13421**

Not tested in other applications.

Calculated MW 11 kDa. ([Note](#))

Properties

Form	Liquid
Buffer	PBS, 1% BSA
Preservative	No preservatives
Storage	Store as concentrated solution. Centrifuge briefly prior to opening vial. For short-term storage (1-2 weeks), store at 4°C. For long-term storage, aliquot and store at -20°C or below. Avoid multiple freeze-thaw cycles.
Concentration	Batch dependent (Please refer to the vial label for the specific concentration.)
Immunogen	Bovine osteocalcin



For full product information, images and publications, please visit our [website](#).

Purification Purified by affinity chromatography

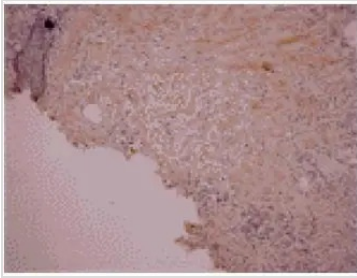
Conjugation Unconjugated

Note

For laboratory research use only. Not for any clinical, therapeutic, or diagnostic use in humans or animals. Not for animal or human consumption.

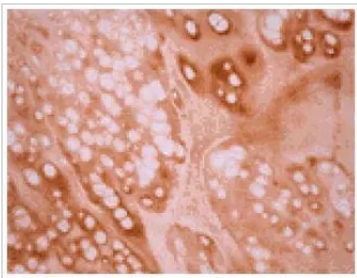
Purchasers shall not, and agree not to enable third parties to, analyze, copy, reverse engineer or otherwise attempt to determine the structure or sequence of the product.

DATA IMAGES



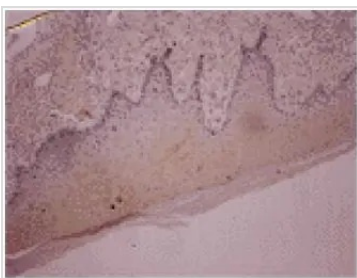
GTX13418 IHC-P Image

IHC-P analysis of human synovial sarcoma tissue using GTX13418 Osteocalcin antibody [OC4-30].



GTX13418 IHC-P Image

IHC-P analysis of human chondroma tissue using GTX13418 Osteocalcin antibody [OC4-30].



GTX13418 IHC-P Image

IHC-P analysis of human synovial sarcoma tissue using GTX13418 Osteocalcin antibody [OC4-30].



For full product information, images and publications, please visit our [website](#).