

Zika virus Capsid protein antibody

Cat. No. GTX134186

Host	Rabbit
Clonality	Polyclonal
Isotype	IgG
Applications	WB, ICC/IF
Reactivity	Zika virus

References (7)

Package

100 µl, 25 µl

Applications

Application Note

*Optimal dilutions/concentrations should be determined by the researcher.

Suggested dilution	Recommended dilution
WB	1:5000-1:20000
ICC/IF	1:100-1:1000

Not tested in other applications.

Calculated MW 12 kDa. ([Note](#))

Product Note

This antibody was raised against the Zika virus Capsid protein (strain: H/PF/2013), and the immunogen shares 100% sequence identity with strain MR 766.

Properties

Form	Liquid
Buffer	PBS, 20% Glycerol
Preservative	0.025% ProClin 300
Storage	Store as concentrated solution. Centrifuge briefly prior to opening vial. For short-term storage (1-2 weeks), store at 4°C. For long-term storage, aliquot and store at -20°C or below. Avoid multiple freeze-thaw cycles.
Concentration	0.5 mg/ml (Please refer to the vial label for the specific concentration.)
Immunogen	Carrier-protein conjugated synthetic peptide encompassing a sequence within the C-terminus region of Zika virus Capsid protein (strain H/PF/2013). The exact sequence is proprietary.
Purification	Purified by antigen-affinity chromatography.
Conjugation	Unconjugated



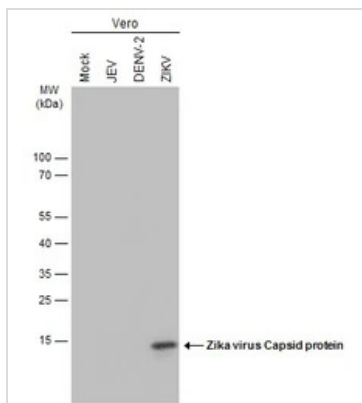
For full product information, images and publications, please visit our [website](#).

For laboratory research use only. Not for any clinical, therapeutic, or diagnostic use in humans or animals. Not for animal or human consumption.

Note

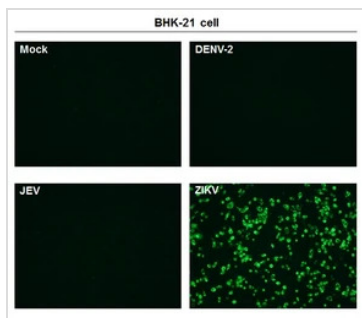
Purchasers shall not, and agree not to enable third parties to, analyze, copy, reverse engineer or otherwise attempt to determine the structure or sequence of the product.

DATA IMAGES



GTX134186 WB Image

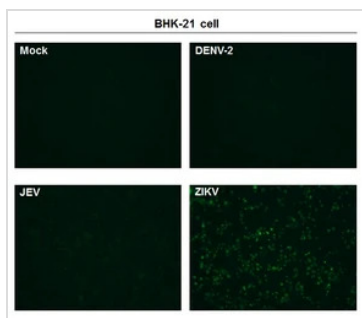
Non-infected (–) and infected (+) Vero whole cell extracts (15 µg) were separated by 4-20% SDS-PAGE, and the membrane was blotted with Zika virus Capsid protein antibody (GTX134186) diluted at 1:20000. The HRP-conjugated anti-rabbit IgG antibody (GTX213110-01) was used to detect the primary antibody.



GTX134186 ICC/IF Image

Immunofluorescent analysis of non-infected and infected BHK-21 cells (methanol fixed) using Zika virus Capsid protein antibody (GTX134186).

Green: Zika virus Capsid protein antibody (GTX134186) diluted at 1:5000.



GTX134186 ICC/IF Image

Immunofluorescent analysis of non-infected and infected BHK-21 cells (PFA fixed) using Zika virus Capsid protein antibody (GTX134186).

Green: Zika virus Capsid protein antibody (GTX134186) diluted at 1:5000.



For full product information, images and publications, please visit our [website](https://www.genetex.com).