

MADH7 antibody

Cat. No. GTX134232

Host	Rabbit
Clonality	Polyclonal
Isotype	IgG
Application	WB, ICC/IF, IHC-Fr
Reactivity	Human, Mouse, Rat

Package
100 µl, 25 µl

APPLICATION

Application Note

*Optimal dilutions/concentrations should be determined by the researcher.

Suggested dilution	Recommended dilution
WB	1:500-1:10000
ICC/IF	1:100-1:1000
IHC-Fr	1:100-1:1000

Not tested in other applications.

Calculated MW	46 kDa. (Note)
Product Note	This antibody is specific for human MADH7 protein, and it does not cross react with human MADH1, MADH2, MADH3, MADH4, and MADH5 protein.

PROPERTIES

Form	Liquid
Buffer	PBS, 1% BSA, 20% Glycerol
Preservative	0.025% ProClin 300
Storage	Store as concentrated solution. Centrifuge briefly prior to opening vial. For short-term storage (1-2 weeks), store at 4°C. For long-term storage, aliquot and store at -20°C or below. Avoid multiple freeze-thaw cycles.
Concentration	0.34 mg/ml (Please refer to the vial label for the specific concentration.)
Immunogen	Carrier-protein conjugated synthetic peptide encompassing a sequence within the N-terminus region of human MADH7. The exact sequence is proprietary.
Purification	Purified by antigen-affinity chromatography.
Conjugation	Unconjugated

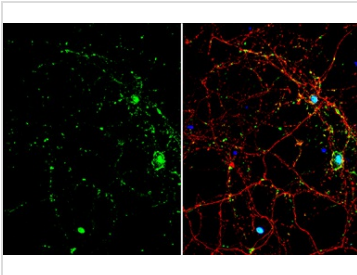


For full product information, images and publications, please visit our [website](#).

For laboratory research use only. Not for any clinical, therapeutic, or diagnostic use in humans or animals. Not for animal or human consumption.

Note

Purchasers shall not, and agree not to enable third parties to, analyze, copy, reverse engineer or otherwise attempt to determine the structure or sequence of the product.

DATA IMAGES

GTx134232 ICC/IF Image

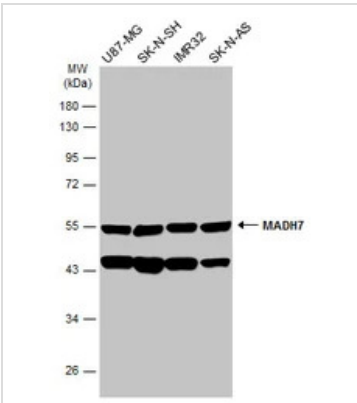
MADH7 antibody detects MADH7 protein by immunofluorescent analysis.

Sample: DIV9 rat E18 primary cortical neuron cells were fixed in 4% paraformaldehyde at RT for 15 min.

Green: MADH7 stained by MADH7 antibody (GTx134232) diluted at 1:500.

Red: Tau, stained by Tau antibody [GT287] (GTX634809) diluted at 1:500.

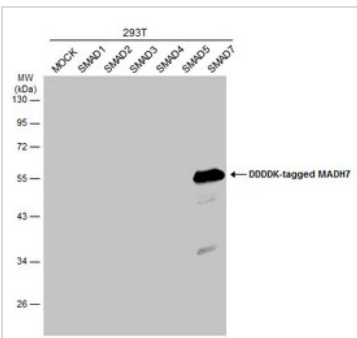
Blue: Fluoroshield with DAPI (GTX30920).


GTx134232 WB Image

Various whole cell extracts (30 µg) were separated by 10% SDS-PAGE, and the membrane was blotted with

MADH7 antibody (GTx134232) diluted at 1:2000. The HRP-conjugated anti-rabbit IgG antibody

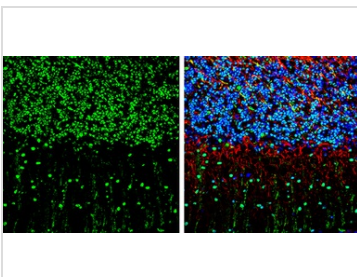
(GTX213110-01) was used to detect the primary antibody.


GTx134232 WB Image

Non-transfected (-) and transfected (+) 293T whole cell extracts (30 µg) were separated by 10% SDS-PAGE,

and the membrane was blotted with MADH7 antibody (GTx134232) diluted at 1:5000. The HRP-conjugated

anti-rabbit IgG antibody (GTX213110-01) was used to detect the primary antibody.


GTx134232 IHC-Fr Image

MADH7 antibody detects MADH7 protein by immunohistochemical analysis.

Sample: Frozen-sectioned mouse cerebellum.

Green: MADH7 stained by MADH7 antibody (GTx134232) diluted at 1:250.

Red: NF-H, stained by NF-H antibody [GT114] (GTX634289) diluted at 1:500.

Blue: Fluoroshield with DAPI (GTX30920).



For full product information, images and publications, please visit our [website](https://www.genetex.com).