

# EP300 antibody

**Cat. No. GTX134238**

<b>Host</b>	Rabbit
<b>Clonality</b>	Polyclonal
<b>Isotype</b>	IgG
<b>Application</b>	WB, IHC-P
<b>Reactivity</b>	Human, Mouse

**Package**  
100 µl, 25 µl

## APPLICATION

### Application Note

\*Optimal dilutions/concentrations should be determined by the researcher.

Suggested dilution	Recommended dilution
WB	1:500-1:3000
IHC-P	Assay dependent

Not tested in other applications.

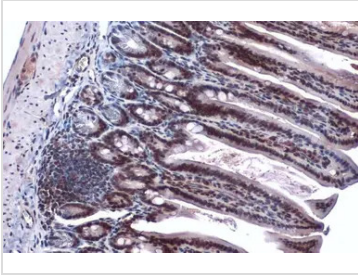
**Calculated MW** 264 kDa. ([Note](#))

## PROPERTIES

<b>Form</b>	Liquid
<b>Buffer</b>	PBS, 20% Glycerol
<b>Preservative</b>	0.025% ProClin 300
<b>Storage</b>	Store as concentrated solution. Centrifuge briefly prior to opening vial. For short-term storage (1-2 weeks), store at 4°C. For long-term storage, aliquot and store at -20°C or below. Avoid multiple freeze-thaw cycles.
<b>Concentration</b>	1.29 mg/ml (Please refer to the vial label for the specific concentration.)
<b>Immunogen</b>	Carrier-protein conjugated synthetic peptide encompassing a sequence within the N-terminus region of human EP300. The exact sequence is proprietary.
<b>Purification</b>	Purified by antigen-affinity chromatography.
<b>Conjugation</b>	Unconjugated
<b>Note</b>	For laboratory research use only. Not for any clinical, therapeutic, or diagnostic use in humans or animals. Not for animal or human consumption.  Purchasers shall not, and agree not to enable third parties to, analyze, copy, reverse engineer or otherwise attempt to determine the structure or sequence of the product.



For full product information, images and publications, please visit our [website](#).

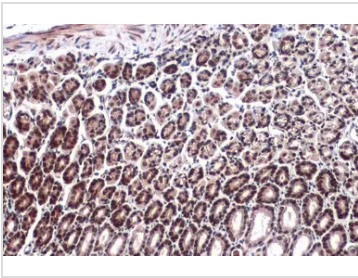
**DATA IMAGES**

**GTX134238 IHC-P Image**

EP300 antibody detects EP300 protein at nucleus by immunohistochemical analysis.

Sample: Paraffin-embedded mouse intestine.

EP300 stained by EP300 antibody (GTX134238) diluted at 1:1000.

Antigen Retrieval: Citrate buffer, pH 6.0, 15 min

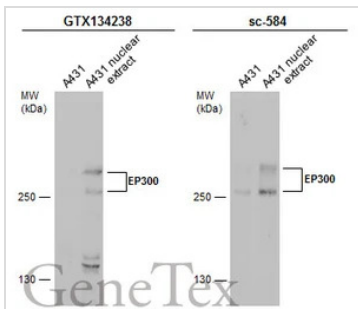

**GTX134238 IHC-P Image**

EP300 antibody detects EP300 protein at nucleus by immunohistochemical analysis.

Sample: Paraffin-embedded mouse stomach.

EP300 stained by EP300 antibody (GTX134238) diluted at 1:1000.

Antigen Retrieval: Citrate buffer, pH 6.0, 15 min


**GTX134238 WB Image**

A431 whole cell and nuclear extracts (30 µg) were separated by 5% SDS-PAGE, and the membranes were blotted with EP300 antibody (GTX134238) diluted at 1:500 and competitor's antibody (sc-584) diluted at 1:100. The HRP-conjugated anti-rabbit IgG antibody (GTX213110-01) was used to detect the primary antibody.

\*The competitor is not affiliated with GeneTex and does not endorse this product.



For full product information, images and publications, please visit our [website](https://www.genetex.com).