

# FGFR4 antibody

**Cat. No. GTX134355**

|                    |              |
|--------------------|--------------|
| <b>Host</b>        | Rabbit       |
| <b>Clonality</b>   | Polyclonal   |
| <b>Isotype</b>     | IgG          |
| <b>Application</b> | WB, IHC-P    |
| <b>Reactivity</b>  | Human, Mouse |

[Reference \( 2 \)](#)

**Package**

100 µl, 25 µl

## APPLICATION

### Application Note

\*Optimal dilutions/concentrations should be determined by the researcher.

| Suggested dilution | Recommended dilution |
|--------------------|----------------------|
| WB                 | 1:500-1:3000         |
| IHC-P              | Assay dependent      |

Not tested in other applications.

**Calculated MW** 88 kDa. ( [Note](#) )

## PROPERTIES

|                      |  |
|----------------------|--|
| <b>Form</b>          | Liquid   |
| <b>Buffer</b>        | PBS, 20% Glycerol  |
| <b>Preservative</b>  | 0.025% ProClin 300   |
| <b>Storage</b>       | Store as concentrated solution. Centrifuge briefly prior to opening vial. For short-term storage (1-2 weeks), store at 4°C. For long-term storage, aliquot and store at -20°C or below. Avoid multiple freeze-thaw cycles. |
| <b>Concentration</b> | 0.72 mg/ml (Please refer to the vial label for the specific concentration.)  |
| <b>Immunogen</b>     | Recombinant protein encompassing a sequence within the Extracellular domain of human FGFR4. The exact sequence is proprietary.   |
| <b>Purification</b>  | Purified by antigen-affinity chromatography.   |
| <b>Conjugation</b>   | Unconjugated   |

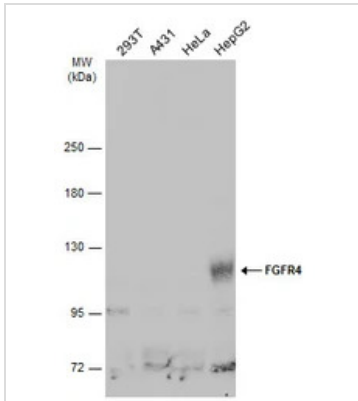
### Note

For laboratory research use only. Not for any clinical, therapeutic, or diagnostic use in humans or animals. Not for animal or human consumption.

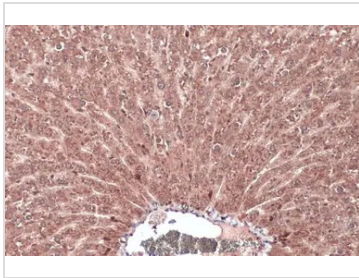
Purchasers shall not, and agree not to enable third parties to, analyze, copy, reverse engineer or otherwise attempt to determine the structure or sequence of the product.



For full product information, images and publications, please visit our [website](#).

**DATA IMAGES**

**GTX134355 WB Image**

Various whole cell extracts (30  $\mu$ g) were separated by 5% SDS-PAGE, and the membrane was blotted with FGFR4 antibody (GTX134355) diluted at 1:500. The HRP-conjugated anti-rabbit IgG antibody (GTX213110-01) was used to detect the primary antibody.

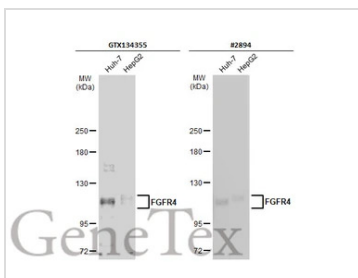

**GTX134355 IHC-P Image**

FGFR4 antibody detects FGFR4 protein at cytoplasm by immunohistochemical analysis.

Sample: Paraffin-embedded mouse liver.

FGFR4 stained by FGFR4 antibody (GTX134355) diluted at 1:500.

Antigen Retrieval: Citrate buffer, pH 6.0, 15 min


**GTX134355 WB Image**

Various whole cell extracts (30  $\mu$ g) were separated by 5% SDS-PAGE, and the membranes were blotted with FGFR4 antibody (GTX134355) diluted at 1:500 and competitor's antibody (#2894) diluted at 1:500. The HRP-conjugated anti-rabbit IgG antibody (GTX213110-01) was used to detect the primary antibody.

\*The competitor is not affiliated with GeneTex and does not endorse this product.



For full product information, images and publications, please visit our [website](https://www.genetex.com).