

Caspase 6 (cleaved Asp162) antibody

Cat. No. GTX134362

Host	Rabbit
Clonality	Polyclonal
Isotype	IgG
Application	WB, IHC-P
Reactivity	Human, Mouse, Rat

★★★★☆ Review (1)

Package
100 µl, 25 µl

APPLICATION

Application Note

*Optimal dilutions/concentrations should be determined by the researcher.

Suggested dilution	Recommended dilution
WB	1:1000
IHC-P	Assay dependent

Not tested in other applications.

Calculated MW 33 kDa. ([Note](#))

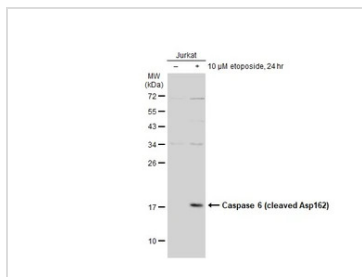
PROPERTIES

Form	Liquid
Buffer	PBS, 20% Glycerol
Preservative	0.025% ProClin 300
Storage	Store as concentrated solution. Centrifuge briefly prior to opening vial. For short-term storage (1-2 weeks), store at 4°C. For long-term storage, aliquot and store at -20°C or below. Avoid multiple freeze-thaw cycles.
Concentration	1.2 mg/ml (Please refer to the vial label for the specific concentration.)
Immunogen	Carrier-protein conjugated synthetic peptide encompassing a sequence within the center region of human Caspase 6 (cleaved Asp162). The exact sequence is proprietary.
Purification	Purified by antigen-affinity chromatography.
Conjugation	Unconjugated
Note	For laboratory research use only. Not for any clinical, therapeutic, or diagnostic use in humans or animals. Not for animal or human consumption. Purchasers shall not, and agree not to enable third parties to, analyze, copy, reverse engineer or otherwise attempt to determine the structure or sequence of the product.



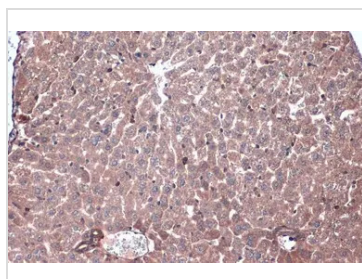
For full product information, images and publications, please visit our [website](#).

DATA IMAGES



GTX134362 WB Image

Untreated (–) and treated (+) Jurkat whole cell extracts (30 μg) were separated by 12% SDS-PAGE, and the membrane was blotted with Caspase 6 (cleaved Asp162) antibody (GTX134362) diluted at 1:1000. The HRP-conjugated anti-rabbit IgG antibody (GTX213110-01) was used to detect the primary antibody, and the signal was developed with Trident ECL plus-Enhanced.



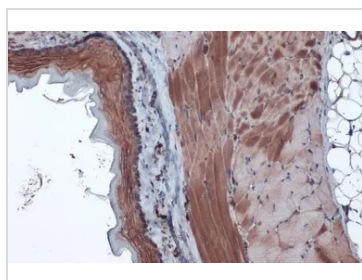
GTX134362 IHC-P Image

Caspase 6 (cleaved Asp162) antibody detects Caspase 6 (cleaved Asp162) protein at cytoplasm by immunohistochemical analysis.

Sample: Paraffin-embedded mouse liver.

Caspase 6 (cleaved Asp162) stained by Caspase 6 (cleaved Asp162) antibody (GTX134362) diluted at 1:1000.

Antigen Retrieval: Citrate buffer, pH 6.0, 15 min



GTX134362 IHC-P Image

Caspase 6 (cleaved Asp162) antibody detects Caspase 6 (cleaved Asp162) protein at cytoplasm by immunohistochemical analysis.

Sample: Paraffin-embedded rat esophagus.

Caspase 6 (cleaved Asp162) stained by Caspase 6 (cleaved Asp162) antibody (GTX134362) diluted at 1:1000.

Antigen Retrieval: Citrate buffer, pH 6.0, 15 min



For full product information, images and publications, please visit our [website](https://www.genetex.com).