

Myelin PLP antibody

Cat. No. GTX134433

Host	Rabbit
Clonality	Polyclonal
Isotype	IgG
Application	IHC-P
Reactivity	Mouse, Rat

Package
100 µl, 25 µl

APPLICATION

Application Note

*Optimal dilutions/concentrations should be determined by the researcher.

Suggested dilution	Recommended dilution
IHC-P	1:1000
Not tested in other applications.	

Calculated MW 30 kDa. ([Note](#))

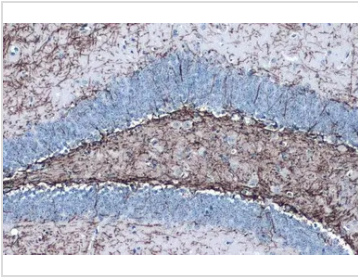
PROPERTIES

Form	Liquid
Buffer	PBS, 20% Glycerol
Preservative	0.025% ProClin 300
Storage	Store as concentrated solution. Centrifuge briefly prior to opening vial. For short-term storage (1-2 weeks), store at 4°C. For long-term storage, aliquot and store at -20°C or below. Avoid multiple freeze-thaw cycles.
Concentration	0.86 mg/ml (Please refer to the vial label for the specific concentration.)
Immunogen	Synthetic peptide encompassing a sequence within the Intracellular domain of mouse Myelin PLP. The exact sequence is proprietary.
Purification	Purified by antigen-affinity chromatography.
Conjugation	Unconjugated
Note	For laboratory research use only. Not for any clinical, therapeutic, or diagnostic use in humans or animals. Not for animal or human consumption. Purchasers shall not, and agree not to enable third parties to, analyze, copy, reverse engineer or otherwise attempt to determine the structure or sequence of the product.



For full product information, images and publications, please visit our [website](#).

DATA IMAGES



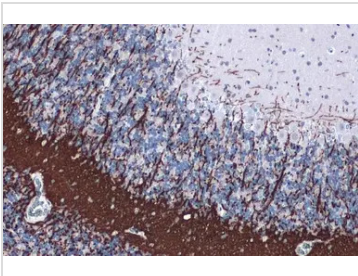
GTX134433 IHC-P Image

Myelin PLP antibody detects Myelin PLP protein at cell membrane by immunohistochemical analysis.

Sample: Paraffin-embedded mouse hippocampus.

Myelin PLP stained by Myelin PLP antibody (GTX134433) diluted at 1:1000.

Antigen Retrieval: Citrate buffer, pH 6.0, 15 min



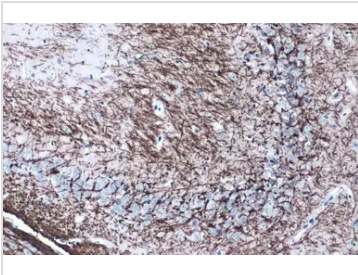
GTX134433 IHC-P Image

Myelin PLP antibody detects Myelin PLP protein at cell membrane by immunohistochemical analysis.

Sample: Paraffin-embedded rat cerebellum.

Myelin PLP stained by Myelin PLP antibody (GTX134433) diluted at 1:1000.

Antigen Retrieval: Citrate buffer, pH 6.0, 15 min



GTX134433 IHC-P Image

Myelin PLP antibody detects Myelin PLP protein at cell membrane by immunohistochemical analysis.

Sample: Paraffin-embedded mouse hippocampus.

Myelin PLP stained by Myelin PLP antibody (GTX134433) diluted at 1:1000.

Antigen Retrieval: Citrate buffer, pH 6.0, 15 min



For full product information, images and publications, please visit our [website](#).