

## Myelin PLP antibody

Cat. No. GTX134433

Host	Rabbit
Clonality	Polyclonal
Isotype	IgG
Applications	IHC-P
Reactivity	Mouse, Rat

## Package

100 µl, 25 µl

## Applications

## Application Note

\*Optimal dilutions/concentrations should be determined by the researcher.

Suggested dilution	Recommended dilution
IHC-P	1:1000

Not tested in other applications.

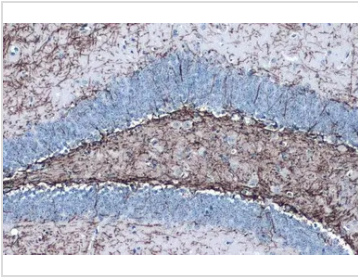
## Properties

Form	Liquid
Buffer	PBS, 20% Glycerol
Preservative	0.025% ProClin 300
Storage	Store as concentrated solution. Centrifuge briefly prior to opening vial. For short-term storage (1-2 weeks), store at 4°C. For long-term storage, aliquot and store at -20°C or below. Avoid multiple freeze-thaw cycles.
Concentration	0.86 mg/ml (Please refer to the vial label for the specific concentration.)
Immunogen	Synthetic peptide encompassing a sequence within the Intracellular domain of mouse Myelin PLP. The exact sequence is proprietary.
Purification	Purified by antigen-affinity chromatography.
Conjugation	Unconjugated
Note	<p>For laboratory research use only. Not for any clinical, therapeutic, or diagnostic use in humans or animals. Not for animal or human consumption.</p> <p>Purchasers shall not, and agree not to enable third parties to, analyze, copy, reverse engineer or otherwise attempt to determine the structure or sequence of the product.</p>



For full product information, images and publications, please visit our [website](#).

## DATA IMAGES



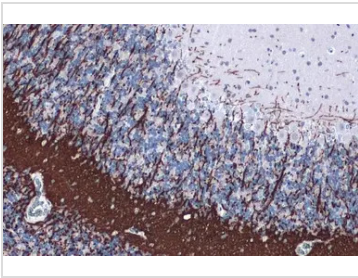
### GTX134433 IHC-P Image

Myelin PLP antibody detects Myelin PLP protein at cell membrane by immunohistochemical analysis.

Sample: Paraffin-embedded mouse hippocampus.

Myelin PLP stained by Myelin PLP antibody (GTX134433) diluted at 1:1000.

Antigen Retrieval: Citrate buffer, pH 6.0, 15 min



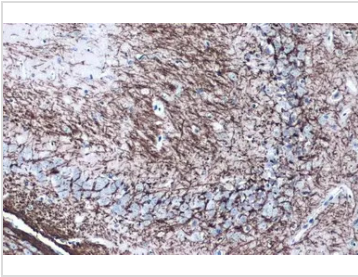
### GTX134433 IHC-P Image

Myelin PLP antibody detects Myelin PLP protein at cell membrane by immunohistochemical analysis.

Sample: Paraffin-embedded rat cerebellum.

Myelin PLP stained by Myelin PLP antibody (GTX134433) diluted at 1:1000.

Antigen Retrieval: Citrate buffer, pH 6.0, 15 min



### GTX134433 IHC-P Image

Myelin PLP antibody detects Myelin PLP protein at cell membrane by immunohistochemical analysis.

Sample: Paraffin-embedded mouse hippocampus.

Myelin PLP stained by Myelin PLP antibody (GTX134433) diluted at 1:1000.

Antigen Retrieval: Citrate buffer, pH 6.0, 15 min



For full product information, images and publications, please visit our [website](#).