

CD11b antibody

Cat. No. GTX134493

Host	Rabbit
Clonality	Polyclonal
Isotype	IgG
Applications	WB, IHC-P
Reactivity	Mouse, Rat

References (2)

Package

100 µl, 25 µl

Applications

Application Note

*Optimal dilutions/concentrations should be determined by the researcher.

Suggested dilution	Recommended dilution
WB	1:500-1:3000
IHC-P	1:100-1:1000

Not tested in other applications.

Properties

Form	Liquid
Buffer	PBS, 20% Glycerol
Preservative	0.025% ProClin 300
Storage	Store as concentrated solution. Centrifuge briefly prior to opening vial. For short-term storage (1-2 weeks), store at 4°C. For long-term storage, aliquot and store at -20°C or below. Avoid multiple freeze-thaw cycles.
Concentration	1.17 mg/ml (Please refer to the vial label for the specific concentration.)
Immunogen	Carrier-protein conjugated synthetic peptide encompassing a sequence within the center region of mouse CD11b. The exact sequence is proprietary.
Purification	Purified by antigen-affinity chromatography.
Conjugation	Unconjugated

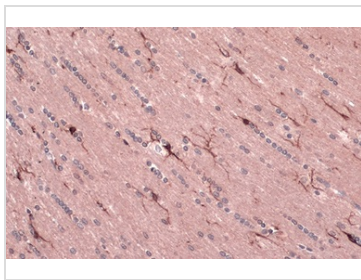
Note

For laboratory research use only. Not for any clinical, therapeutic, or diagnostic use in humans or animals. Not for animal or human consumption.

Purchasers shall not, and agree not to enable third parties to, analyze, copy, reverse engineer or otherwise attempt to determine the structure or sequence of the product.

For full product information, images and publications, please visit our [website](#).

DATA IMAGES

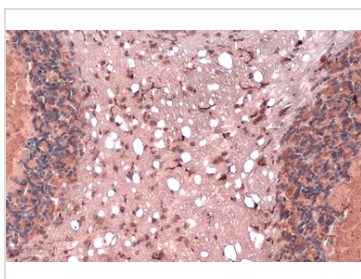
**GTX134493 IHC-P Image**

CD11b antibody detects CD11b protein at cytoplasm by immunohistochemical analysis.

Sample: Paraffin-embedded rat brain.

CD11b stained by CD11b antibody (GTX134493) diluted at 1:200.

Antigen Retrieval: Citrate buffer, pH 6.0, 15 min

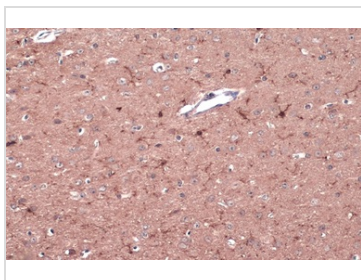
**GTX134493 IHC-P Image**

CD11b antibody detects CD11b protein at cytoplasm by immunohistochemical analysis.

Sample: Paraffin-embedded mouse brain.

CD11b stained by CD11b antibody (GTX134493) diluted at 1:200.

Antigen Retrieval: Citrate buffer, pH 6.0, 15 min

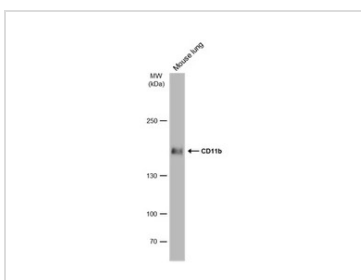
**GTX134493 IHC-P Image**

CD11b antibody detects CD11b protein at cytoplasm by immunohistochemical analysis.

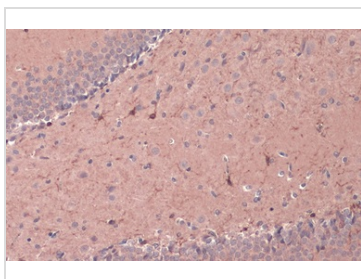
Sample: Paraffin-embedded mouse brain.

CD11b stained by CD11b antibody (GTX134493) diluted at 1:200.

Antigen Retrieval: Citrate buffer, pH 6.0, 15 min

**GTX134493 WB Image**

Mouse tissue extract (50 µg) was separated by 5% SDS-PAGE, and the membrane was blotted with CD11b antibody (GTX134493) diluted at 1:500. The HRP-conjugated anti-rabbit IgG antibody (GTX213110-01) was used to detect the primary antibody.

**GTX134493 IHC-P Image**

CD11b antibody detects CD11b protein at cytoplasm by immunohistochemical analysis.

Sample: Paraffin-embedded rat brain.

CD11b stained by CD11b antibody (GTX134493) diluted at 1:200.

Antigen Retrieval: Citrate buffer, pH 6.0, 15 min



For full product information, images and publications, please visit our [website](#).