

beta Amyloid (1-42) antibody – Conformation Specific

Cat. No. GTX134510

Host	Rabbit
Clonality	Polyclonal
Isotype	IgG
Applications	IHC-P, Dot, ELISA, Neutralizing/Inhibition, Sandwich ELISA
Reactivity	Human, Mouse

References (5)

★★★★★ Review (1)

Package

100 µl, 25 µl

Applications

Application Note

*Optimal dilutions/concentrations should be determined by the researcher.

Suggested dilution	Recommended dilution
IHC-P	1:100-1:1000
Dot	Assay dependent
ELISA	1:1000-1:10000
Neutralizing/Inhibition	Assay dependent
Sandwich ELISA	Assay dependent

Note : Capture : GTX635160, Detection: GTX134510

Not tested in other applications.

Product Note This antibody specifically recognizes beta amyloid aggregates but not peptide monomers.

Properties

Form	Liquid
Buffer	PBS, 1% BSA, 20% Glycerol
Preservative	0.025% ProClin 300
Storage	Store as concentrated solution. Centrifuge briefly prior to opening vial. For short-term storage (1-2 weeks), store at 4°C. For long-term storage, aliquot and store at -20°C or below. Avoid multiple freeze-thaw cycles.
Concentration	0.45 mg/ml (Please refer to the vial label for the specific concentration.)
Immunogen	The immunogen used to generate this antibody corresponds to human Beta amyloid (1-42)
Purification	Purified by antigen-affinity chromatography.
Conjugation	Unconjugated

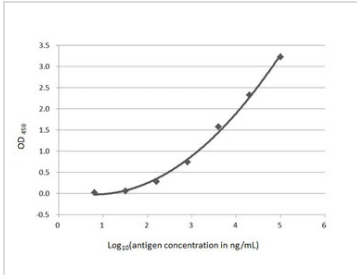
For full product information, images and publications, please visit our [website](#).

Date 2025 / 12 / 20 Page 1 of 2

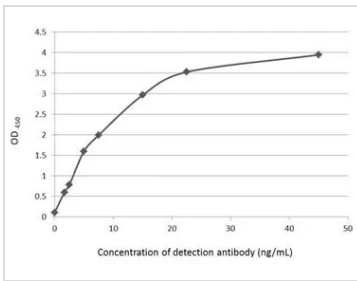
For laboratory research use only. Not for any clinical, therapeutic, or diagnostic use in humans or animals. Not for animal or human consumption.

Note

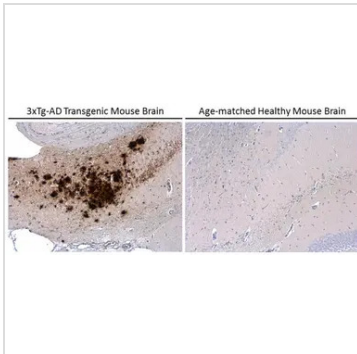
Purchasers shall not, and agree not to enable third parties to, analyze, copy, reverse engineer or otherwise attempt to determine the structure or sequence of the product.

DATA IMAGES

GTx134510 ELISA Image

Sandwich ELISA detection of beta Amyloid (1-42)-peptide aggregate using GTx635160 as capture antibody at concentration of 10 µg/mL and GTx134510 as detection antibody at concentration of 0.45 µg/mL. Rabbit IgG antibody (HRP) (GTx213110-01) was diluted at 1:2000 and used to detect the primary antibody.


GTx134510 ELISA Image

ELISA plate is coated with 100 µL of beta Amyloid (1-42) peptide aggregate at 10 µg/mL. The coated protein is detected with beta Amyloid (1-42) antibody – Conformation Specific (GTx134510) at concentrations ranging from 45 ng/mL down to 1.67 ng/mL.

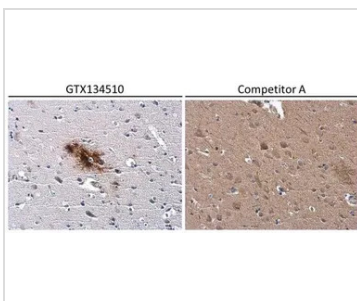

GTx134510 IHC-P Image

Beta amyloid (1-42) antibody (conformation specific) detects beta amyloid protein aggregates by immunohistochemical analysis in the hippocampus of 3xTg-AD transgenic mouse brain (left), but not in age- and gender- matched normal mouse brain (right).

Sample: Paraffin-embedded 3xTg-AD transgenic mouse brain (left) and healthy mouse brain (right).
beta Amyloid (1-42) stained by beta Amyloid (1-42) antibody – Conformation Specific (GTx134510) diluted at 1:500.

Antigen Retrieval: Citrate buffer, pH 6.0

This image was provided courtesy of a customer review.


GTx134510 IHC-P Image

Conformation-specific beta amyloid antibody detects beta amyloid protein aggregates in the occipital lobe of human Alzheimer's disease brain by immunohistochemical analysis.

Antibodies: beta amyloid (1-42) antibody – Conformation Specific (GTx134510) diluted at 1:500, and competitor's antibody diluted at 1:500.

*Competitor's antibody is not affiliated with GeneTex and does not endorse this product.

Antigen Retrieval: Citrate buffer, pH 6.0, 15 min



For full product information, images and publications, please visit our [website](https://www.genetex.com).