

Caspase 1 p10 subunit antibody

Cat. No. GTX134551

Host	Rabbit
Clonality	Polyclonal
Isotype	IgG
Applications	WB, IHC-P
Reactivity	Human, Mouse, Rat

References (4)

Package

100 µl, 25 µl

Applications

Application Note

*Optimal dilutions/concentrations should be determined by the researcher.

Suggested dilution	Recommended dilution
WB	1:500-1:3000
IHC-P	Assay dependent

Not tested in other applications.

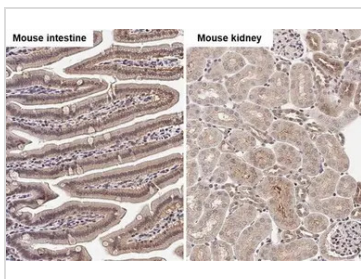
Calculated MW 45 kDa. ([Note](#))

Properties

Form	Liquid
Buffer	PBS, 20% Glycerol
Preservative	0.025% ProClin 300
Storage	Store as concentrated solution. Centrifuge briefly prior to opening vial. For short-term storage (1-2 weeks), store at 4°C. For long-term storage, aliquot and store at -20°C or below. Avoid multiple freeze-thaw cycles.
Concentration	1.35 mg/ml (Please refer to the vial label for the specific concentration.)
Immunogen	Carrier-protein conjugated synthetic peptide encompassing a sequence within the C-terminus region of human Caspase 1 p10 subunit. The exact sequence is proprietary.
Purification	Purified by antigen-affinity chromatography.
Conjugation	Unconjugated
Note	For In vitro laboratory use only. Not for any clinical, therapeutic, or diagnostic use in humans or animals. Not for animal or human consumption.



For full product information, images and publications, please visit our [website](#).

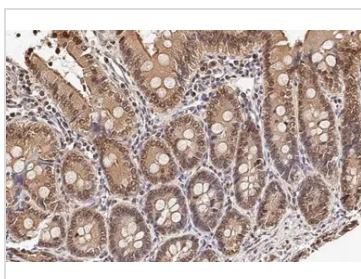
DATA IMAGES

GTX134551 IHC-P Image

Caspase 1 p10 subunit antibody detects Caspase 1 p10 subunit protein by immunohistochemical analysis.

Sample: Paraffin-embedded mouse tissues.

Caspase 1 p10 subunit stained by Caspase 1 p10 subunit antibody (GTX134551) diluted at 1:500.

Antigen Retrieval: Citrate buffer, pH 6.0, 15 min

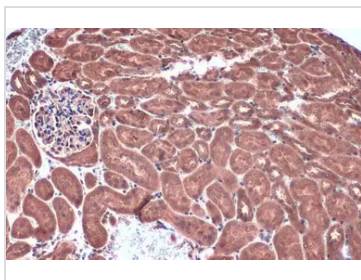

GTX134551 IHC-P Image

Caspase 1 p10 subunit antibody detects Caspase 1 p10 subunit protein at cell membrane and cytoplasm by immunohistochemical analysis.

Sample: Paraffin-embedded rat duodenum.

Caspase 1 p10 subunit stained by Caspase 1 p10 subunit antibody (GTX134551) diluted at 1:500.

Antigen Retrieval: Citrate buffer, pH 6.0, 15 min

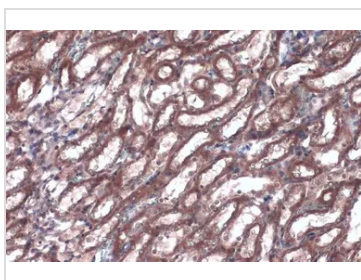

GTX134551 IHC-P Image

Caspase 1 p10 subunit antibody detects Caspase 1 p10 subunit protein at cytoplasm by immunohistochemical analysis.

Sample: Paraffin-embedded mouse kidney.

Caspase 1 p10 subunit stained by Caspase 1 p10 subunit antibody (GTX134551) diluted at 1:1000.

Antigen Retrieval: Citrate buffer, pH 6.0, 15 min

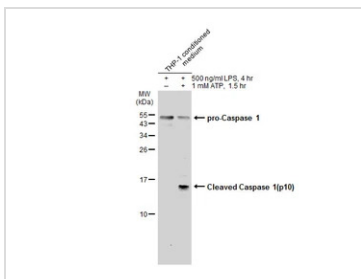

GTX134551 IHC-P Image

Caspase 1 p10 subunit antibody detects Caspase 1 p10 subunit protein at cytoplasm by immunohistochemical analysis.

Sample: Paraffin-embedded rat kidney.

Caspase 1 p10 subunit stained by Caspase 1 p10 subunit antibody (GTX134551) diluted at 1:1000.

Antigen Retrieval: Citrate buffer, pH 6.0, 15 min


GTX134551 WB Image

Untreated (–) and treated (+) THP-1 conditioned medium (30 µg) were separated by 15% SDS-PAGE, and the membrane was blotted with Caspase 1 p10 subunit antibody (GTX134551) diluted at 1:500. The HRP-conjugated anti-rabbit IgG antibody (GTX213110-01) was used to detect the primary antibody.



For full product information, images and publications, please visit our [website](https://www.genetex.com).