

Thrombospondin 2 antibody

Cat. No. GTX134554

Host	Rabbit
Clonality	Polyclonal
Isotype	IgG
Applications	WB, IHC-P
Reactivity	Human

Package
100 µl, 25 µl

PRODUCT

Summary

Thrombospondin 2, also known as THBS2 and TSP2, is a secreted glycoprotein with a predicted molecular weight of 130 kDa. THBS2 mediates cell-to-cell and cell-to-matrix interactions, and can be expressed together with CA 19-9 in patients with early pancreatic ductal adenocarcinoma.

Applications

Application Note

*Optimal dilutions/concentrations should be determined by the researcher.

Suggested dilution	Recommended dilution
WB	1:500-1:3000
IHC-P	Assay dependent

Not tested in other applications.

Calculated MW 130 kDa. ([Note](#))

Properties

Form	Liquid
Buffer	PBS, 20% Glycerol
Preservative	0.025% ProClin 300
Storage	Store as concentrated solution. Centrifuge briefly prior to opening vial. For short-term storage (1-2 weeks), store at 4°C. For long-term storage, aliquot and store at -20°C or below. Avoid multiple freeze-thaw cycles.
Concentration	2.6 mg/ml (Please refer to the vial label for the specific concentration.)
Immunogen	Carrier-protein conjugated synthetic peptide encompassing a sequence within the N-terminus region of human Thrombospondin 2. The exact sequence is proprietary.
Purification	Purified by antigen-affinity chromatography. Glycerol PBS ProClin
Conjugation	Unconjugated

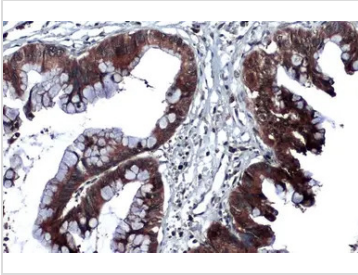


For full product information, images and publications, please visit our [website](#).

For laboratory research use only. Not for any clinical, therapeutic, or diagnostic use in humans or animals. Not for animal or human consumption.

Note

Purchasers shall not, and agree not to enable third parties to, analyze, copy, reverse engineer or otherwise attempt to determine the structure or sequence of the product.

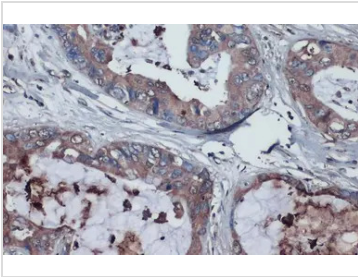
DATA IMAGES

GTX134554 IHC-P Image

Thrombospondin 2 antibody detects Thrombospondin 2 protein at cytoplasm by immunohistochemical analysis.

Sample: Paraffin-embedded human pancreatic cancer.

Thrombospondin 2 stained by Thrombospondin 2 antibody (GTX134554) diluted at 1:1000.

Antigen Retrieval: Citrate buffer, pH 6.0, 15 min

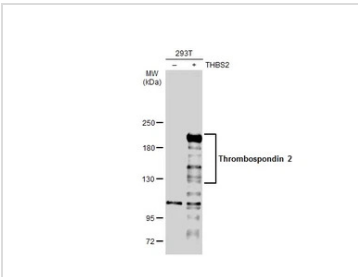

GTX134554 IHC-P Image

Thrombospondin 2 antibody detects Thrombospondin 2 protein at cytoplasm by immunohistochemical analysis.

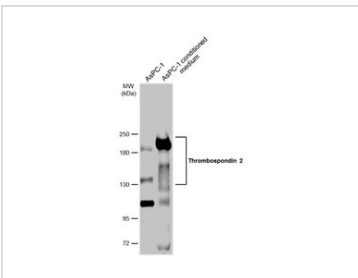
Sample: Paraffin-embedded human pancreatic cancer.

Thrombospondin 2 stained by Thrombospondin 2 antibody (GTX134554) diluted at 1:1000.

Antigen Retrieval: Citrate buffer, pH 6.0, 15 min


GTX134554 WB Image

Non-transfected (–) and transfected (+) 293T whole cell extracts (30 µg) were separated by 5% SDS-PAGE, and the membrane was blotted with Thrombospondin 2 antibody (GTX134554) diluted at 1:1000. The HRP-conjugated anti-rabbit IgG antibody (GTX213110-01) was used to detect the primary antibody.


GTX134554 WB Image

AsPC-1 whole cell extract and conditioned medium (30 µg) were separated by 5% SDS-PAGE, and the membrane was blotted with Thrombospondin 2 antibody (GTX134554) diluted at 1:1000. The HRP-conjugated anti-rabbit IgG antibody (GTX213110-01) was used to detect the primary antibody.



For full product information, images and publications, please visit our [website](https://www.genetex.com).