

IL33 antibody

Cat. No. GTX134566

Host	Rabbit
Clonality	Polyclonal
Isotype	IgG
Application	WB, ICC/IF, IHC-P
Reactivity	Human

Package
100 µl, 25 µl

APPLICATION

Application Note

*Optimal dilutions/concentrations should be determined by the researcher.

Suggested dilution	Recommended dilution
WB	1:500-1:3000
ICC/IF	Assay dependent
IHC-P	Assay dependent

Not tested in other applications.

Calculated MW 31 kDa. ([Note](#))

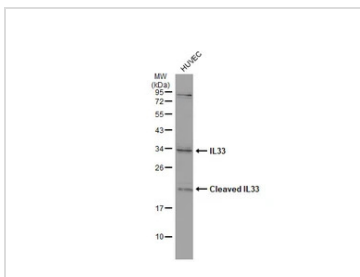
PROPERTIES

Form	Liquid
Buffer	PBS, 20% Glycerol
Preservative	0.025% ProClin 300
Storage	Store as concentrated solution. Centrifuge briefly prior to opening vial. For short-term storage (1-2 weeks), store at 4°C. For long-term storage, aliquot and store at -20°C or below. Avoid multiple freeze-thaw cycles.
Concentration	0.6 mg/ml (Please refer to the vial label for the specific concentration.)
Immunogen	Recombinant protein encompassing a sequence within the center region of human IL33. The exact sequence is proprietary.
Purification	Purified by antigen-affinity chromatography.
Conjugation	Unconjugated
Note	For laboratory use only. Not for any clinical, therapeutic, or diagnostic use in humans or animals. Not for animal or human consumption.



For full product information, images and publications, please visit our [website](#).

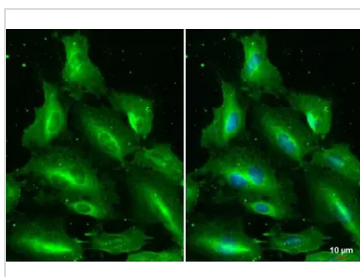
DATA IMAGES



GTX134566 WB Image

Whole cell extract (30 µg) was separated by 12% SDS-PAGE, and the membrane was blotted with IL33 antibody (GTX134566) diluted at 1:1000. The HRP-conjugated anti-rabbit IgG antibody (GTX213110-01) was used to detect the primary antibody.

The observed M.W. is based on the publication: [PMID: 22307629](https://pubmed.ncbi.nlm.nih.gov/22307629/)



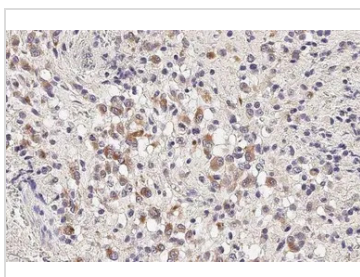
GTX134566 ICC/IF Image

IL33 antibody detects IL33 protein at cytoplasm by immunofluorescent analysis.

Sample: HUVEC cells were fixed in 4% paraformaldehyde at RT for 15 min.

Green: IL33 stained by IL33 antibody (GTX134566) diluted at 1:500.

Blue: Fluoroshield with DAPI (GTX30920).



GTX134566 IHC-P Image

IL33 antibody detects IL33 protein at cytoplasm by immunohistochemical analysis.

Sample: Paraffin-embedded human glioblastoma.

IL33 stained by IL33 antibody (GTX134566) diluted at 1:500.

Antigen Retrieval: Citrate buffer, pH 6.0, 15 min



For full product information, images and publications, please visit our [website](https://www.genetex.com).